

Submittal Package

viega



ProPress® Valves for Copper and Stainless Steel

- Potable Water
- Hydronic Heating
- Chilled Water
- Compressed Air
- Nitrogen N₂
- Argon
- Low Pressure Steam
- Vacuum
- Oxygen O₂ (non medical)
- Other Approved Application

ProPress Zero Lead Ball Valves

Model 2971.1 ZL	2
Model 2970.1 ZL	3
Model 2971.3 ZL	4
Model 2970.3 ZL	5
Model 2971.4 ZL	6
Model 2971.6 ZL	7
Model 2974 ZL	8

ProPress Ball Valves for Non-potable Applications

Model 2973	9
Model 2973.1	10
Model 2973.3	11

ProPress Stainless Steel Ball Valves

Model 4070	12
Model 4370.8	13

Valve Accessories by Model

Product Instructions for ProPress Ball Valves

Viega Limited Warranty ProPress® Fittings and Valves

Submittal Package



Viega ProPress® Ball Valve - Zero Lead* Model 2971.1 ZL

Description

The Zero Lead bronze ball valve is equipped with a full port, Zero Lead bronze body. The ball valve features EPDM sealing elements, EPDM stem seals and Viega's Smart Connect® technology for easy identification of unpressed connections during pressure testing.

Features

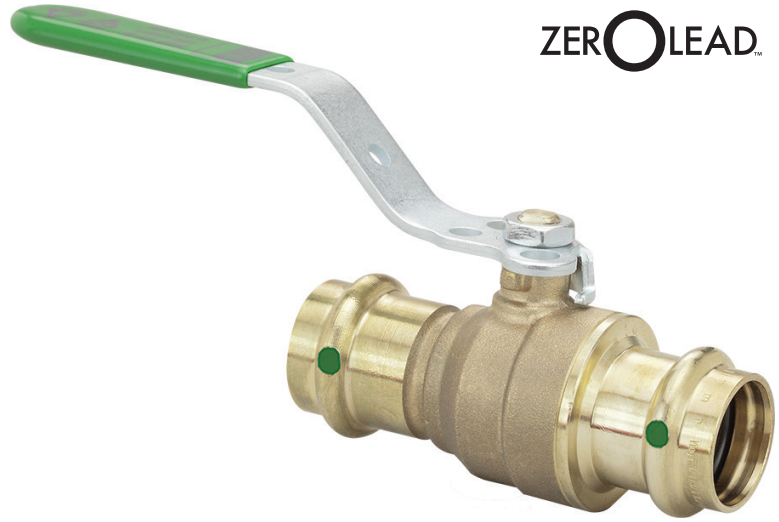
- 316 stainless steel ball
- Eco Brass® blowout-proof stem
- Lockable metal handle
- Reinforced PTFE seats
- Smart Connect technology

Ratings

- 250 CWP
- Temperature Range: 0°F - 250°F
- Max. Operating Pressure: 250 psi

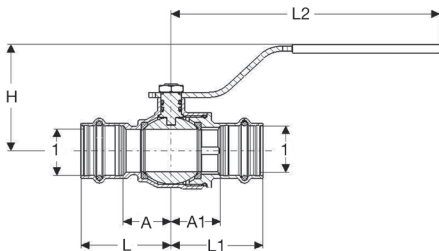
Approvals

- Conforms to MSS SP-110
- NSF - UP Code
- NSF 61 Annex G
- ASME A112.4.14
- Listed by NSF to Commercial Hot



ZERO LEAD.

Component	Material
Body	Zero Lead Bronze C87700
Ball	316 Stainless Steel
Seat	Reinforced PTFE
Stem	Eco Brass C69300
Stem Seals	EPDM
Nut	Zinc plated Steel
Handle	Zinc plated Steel
Handle Cover	Polyvinyl
Sealing Element	EPDM



Part No.	Size (1)	A (in)	A1 (in)	L (in)	L1 (in)	L2 (in)	H (in)
79920	1/2"	0.75	0.75	1.57	1.57	4.57	1.97
79925	3/4"	0.85	0.87	1.75	1.77	4.57	2.09
79930	1"	1.02	1.06	1.93	1.96	5.75	2.46
79935	1 1/4"	1.14	1.12	2.17	2.15	5.75	2.67

*Zero Lead identifies Viega® products meeting the lead free requirements of NSF 61-G through testing under NSF/ANSI 372 (0.25% or less maximum weighted average lead content).

Submittal Package

viega

Viega ProPress® Ball Valve - Zero Lead*

Model 2970.1 ZL

Description

The Zero Lead bronze ball valve is equipped with a full port, Zero Lead bronze body. The ball valve features EPDM sealing elements, EPDM stem seals and Viega's Smart Connect® technology for easy identification of unpressed connections during pressure testing.

Features

- 316 stainless steel ball
- Eco Brass® blowout-proof stem
- Lockable metal handle
- Reinforced PTFE seats
- Smart Connect technology

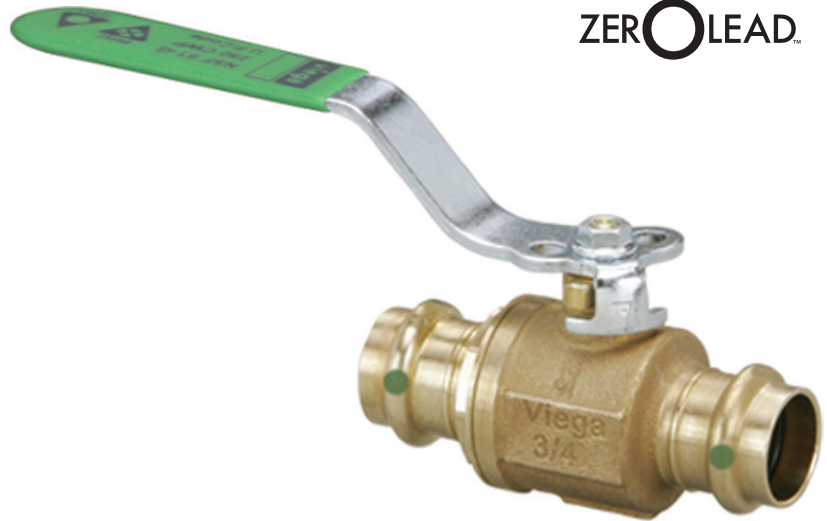
Ratings

- 250 CWP
- Temperature Range: 0°F - 250°F
- Max. Operating Pressure: 250 psi

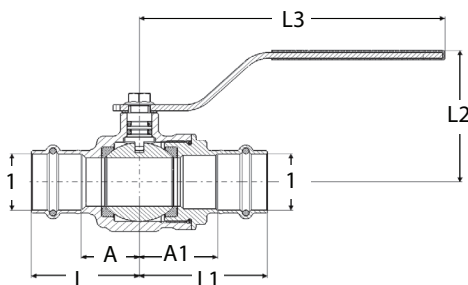
Approvals

- Conforms to MSS SP-110
- NSF - UP Code
- NSF 61 Annex G
- ASME A112.4.14
- Listed by NSF to Commercial Hot

ZERO LEAD.



Component	Material
Body	Zero Lead Bronze C87700
Ball	316 Stainless Steel
Seat	Reinforced PTFE
Stem	Eco Brass C69300
Stem Seals	EPDM
Nut	Zinc plated Steel
Handle	Zinc plated Steel
Handle Cover	Polyvinyl
Sealing Element	EPDM



Part No.	Size (1)	A (in)	A1 (in)	L (in)	L1 (in)	L2 (in)	L3 (in)
79115	1½"	1.50	1.39	2.91	2.80	3.36	6.12
79120	2"	1.77	1.83	3.35	3.40	3.67	6.12

*Zero Lead identifies Viega® products meeting the lead free requirements of NSF 61-G through testing under NSF/ANSI 372 (0.25% or less maximum weighted average lead content).

Submittal Package



Viega ProPress® Ball Valve - Zero Lead* Model 2971.3 ZL

Description

The Zero Lead bronze ball valve is equipped with a full port, Zero Lead bronze body. The ball valve features EPDM sealing elements, EPDM stem seals and Viega's Smart Connect® technology for easy identification of unpressed connections during pressure testing.

Features

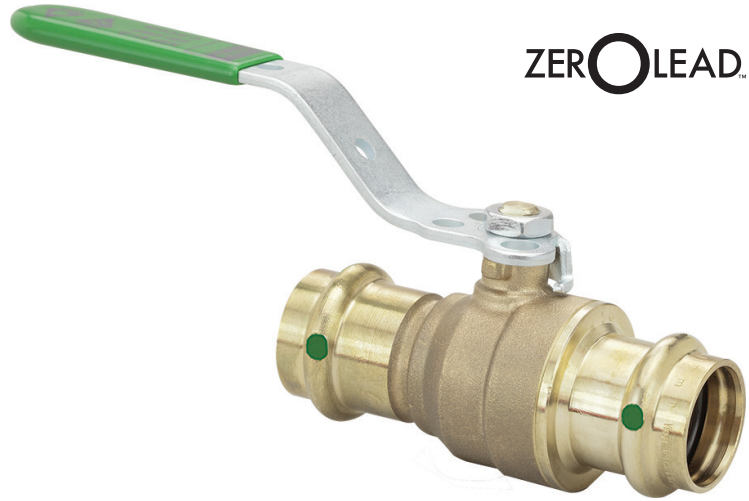
- 316 stainless steel ball
- 316 stainless steel blowout-proof stem
- Lockable metal handle
- Reinforced PTFE seats
- Smart Connect technology

Ratings

- 250 CWP
- Temperature Range: 0°F - 250°F
- Max. Operating Pressure: 250 psi

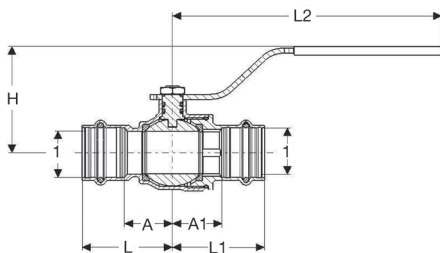
Approvals

- Conforms to MSS SP-110
- NSF - UP Code
- NSF 61 Annex G
- ASME A112.4.14
- Listed by NSF to Commercial Hot



ZERO LEAD™

Component	Material
Body	Zero Lead Bronze C87700
Ball	316 Stainless Steel
Seat	Reinforced PTFE
Stem	316 Stainless Steel
Stem Seals	EPDM
Nut	Zinc plated Steel
Handle	Zinc plated Steel
Handle Cover	Polyvinyl
Sealing Element	EPDM



Part No.	Size (1)	A (in)	A1 (in)	L (in)	L1 (in)	L2 (in)	H (in)
79923	½"	0.75	0.75	1.57	1.57	4.57	1.97
79928	¾"	0.85	0.87	1.75	1.77	4.57	2.09
79933	1"	1.02	1.06	1.93	1.96	5.75	2.46
79938	1¼"	1.14	1.12	2.17	2.15	5.75	2.67

*Zero Lead identifies Viega® products meeting the lead free requirements of NSF 61-G through testing under NSF/ANSI 372 (0.25% or less maximum weighted average lead content).

Submittal Package



Viega ProPress® Ball Valve - Zero Lead* Model 2970.3 ZL

Description

The Zero Lead bronze ball valve is equipped with a full port, Zero Lead bronze body. The ball valve features EPDM sealing elements, EPDM stem seals and Viega's Smart Connect® technology for easy identification of unpressed connections during pressure testing.

Features

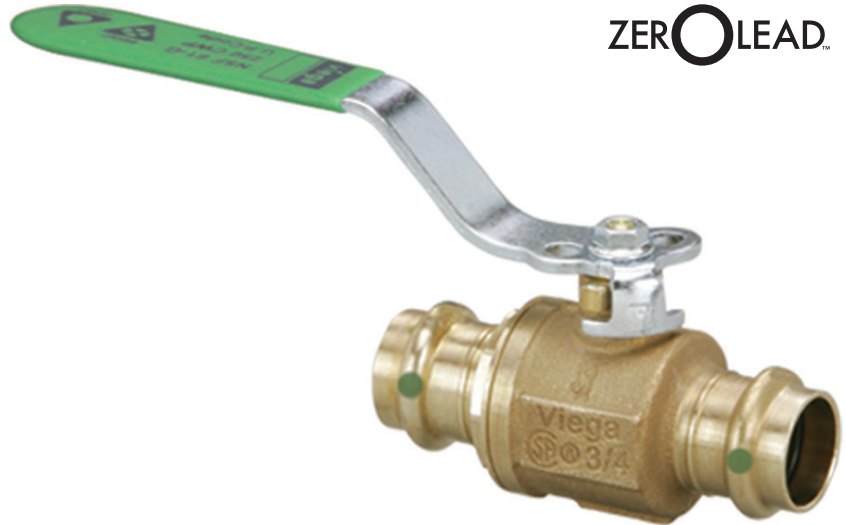
- 316 stainless steel ball
- 316 stainless steel blowout-proof stem
- Lockable metal handle
- Reinforced PTFE seats
- Smart Connect technology

Ratings

- 250 CWP
- Temperature Range: 0°F - 250°F
- Max. Operating Pressure: 250 psi

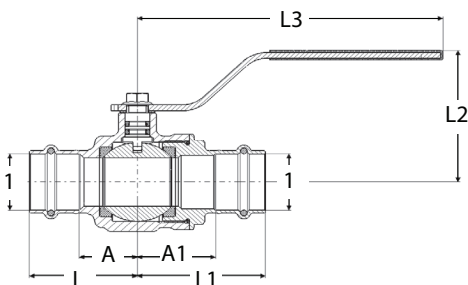
Approvals

- Conforms to MSS SP-110
- NSF - UP Code
- NSF 61 Annex G
- ASME A112.4.14
- Listed by NSF to Commercial Hot



ZERO LEAD.

Component	Material
Body	Zero Lead Bronze C87700
Ball	316 Stainless Steel
Seat	Reinforced PTFE
Stem	316 Stainless Steel
Stem Seals	EPDM
Nut	Zinc plated Steel
Handle	Zinc plated Steel
Handle Cover	Polyvinyl
Sealing Element	EPDM



Part No.	Size (1)	A (in)	A1 (in)	L (in)	L1 (in)	L2 (in)	L3 (in)
79840	1½"	1.50	1.39	2.91	2.80	3.36	6.12
79845	2"	1.77	1.83	3.35	3.41	3.68	6.12

*Zero Lead identifies Viega® products meeting the lead free requirements of NSF 61-G through testing under NSF/ANSI 372 (0.25% or less maximum weighted average lead content).

Submittal Package



Viega ProPress® Ball Valve - Zero Lead* Model 2971.4 ZL

Description

The Zero Lead bronze ball valve is equipped with a full port, Zero Lead bronze body. The ball valve features EPDM sealing elements, EPDM stem seals and Viega's Smart Connect® technology for easy identification of unpressed connections during pressure testing.

Features

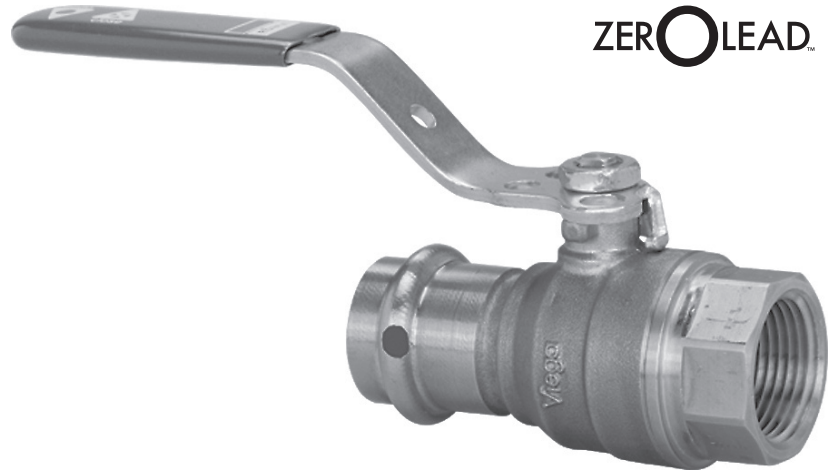
- 316 Stainless Steel Ball
- Eco Brass Blowout-proof Stem
- Lockable Metal Handle
- Reinforced PTFE Seats
- Smart Connect technology
- Press x FPT connections

Ratings

- 250 CWP
- Temperature Range: 0°F - 250°F
- Max. Operating Pressure: 250 psi

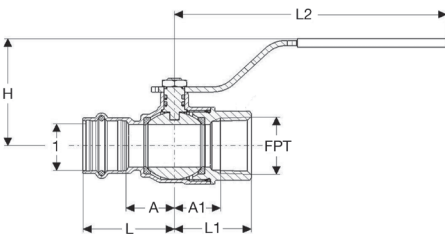
Approvals

- Conforms to MSS SP-110
- NSF - UP Code
- NSF 61 Annex G
- ASME A112.4.14
- Listed by NSF to Commercial Hot



ZERO LEAD.

Component	Material
Body	Zero Lead Bronze C87700
Ball	316 Stainless Steel
Seat	Reinforced PTFE
Stem	Eco Brass C69300
Stem Seals	EPDM
Nut	Zinc plated Steel
Handle	Zinc plated Steel
Handle Cover	Polyvinyl
Sealing Element	EPDM



Product Number	Size 1 x FPT	A (in)	A1 (in)	L (in)	L1 (in)	L2 (in)	H (in)
		79970	1/2" x 1/2"	0.73	0.66	1.57	1.20
79975	3/4" x 3/4"	0.85	0.79	1.75	1.35	4.57	2.09
79980	1" x 1"	1.02	0.98	1.93	1.63	5.75	2.46

*Zero Lead identifies Viega® products meeting the lead free requirements of NSF 61-G through testing under NSF/ANSI 372 (0.25% or less maximum weighted average lead content).

Submittal Package

viega

Viega ProPress® Ball Valve - Zero Lead*

Model 2971.6 ZL

Description

The Zero Lead bronze ball valve is equipped with a full port, Zero Lead bronze body. The ball valve features EPDM sealing elements, EPDM stem seals and Viega's Smart Connect® technology for easy identification of unpressed connections during pressure testing.

Features

- 316 Stainless Steel Ball
- Eco Brass Blowout-proof Stem
- Lockable Metal Handle
- Reinforced PTFE Seats
- Smart Connect technology
- Press x garden hose connections
- Hose cap is full pressure rated

Ratings

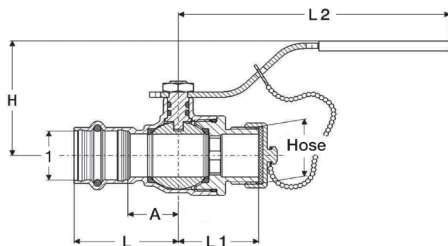
- 250 CWP
- Temperature Range: 0°F - 250°F
- Max. Operating Pressure: 250 psi

Approvals

- Conforms to MSS SP-110
- NSF - UP Code
- NSF 61 Annex G
- ASME A112.4.14
- Listed by NSF to Commercial Hot



Component	Material
Body	Zero Lead Bronze C87700
Ball	316 Stainless Steel
Seat	Reinforced PTFE
Stem	Eco Brass C69300
Stem Seals	EPDM
Nut	Zinc plated Steel
Handle	Zinc plated Steel
Handle Cover	Polyvinyl
Sealing Element	EPDM



Product Number	Size 1 x Hose	A (in)	L (in)	L1 (in)	L2 (in)	H (in)
		79875	1/2" x 3/4"	0.75	1.57	1.35
79876	3/4" x 3/4"	0.85	1.75	1.35	4.57	2.09

*Zero Lead identifies Viega® products meeting the lead free requirements of NSF 61-G through testing under NSF/ANSI 372 (0.25% or less maximum weighted average lead content).

Viega LLC • 585 Interlocken Blvd. • Broomfield, CO 80021 • Phone (800) 976-9819 • www.viega.us

Submittal Package



ProPress® Zero Lead* Bronze Check Valve Model 2974 ZL

ZERO LEAD™

Description

- Zero Lead Bronze Body
- ProPress Ends
- Spring Check
- EPDM Seals
- 0.5 psi Cracking Pressure

Features

- Low Pressure Loss
- Silent Operation
- Stainless Steel Spring
- Smart Connect® technology

Ratings

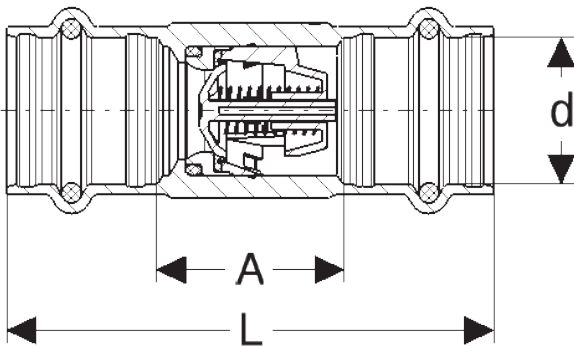
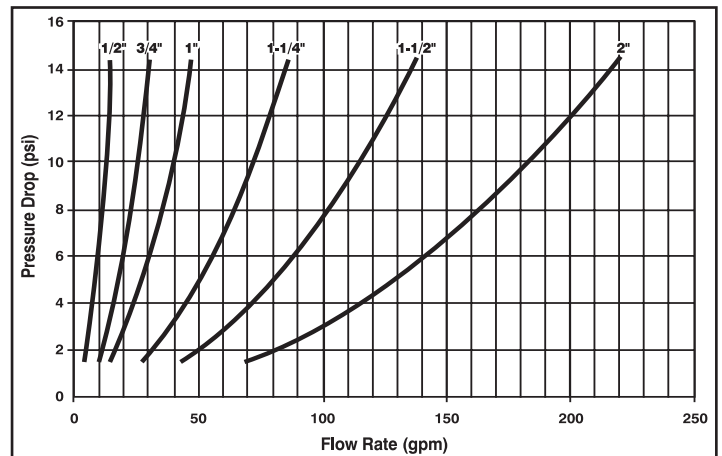
- 400 WOG
- Max. Operating Pressure: 200 psi
- Temperature Range: 0°F - 200°F

Approvals

- Conforms to MSS SP-80
- NSF-61 Annex G



Pressure Drop



Part No	d	A (in)	L (in)	Wt (lbs)
79035	1/2"	0.87	2.52	0.17
79040	3/4"	1.14	2.95	0.28
79045	1"	1.34	3.15	0.42
79050	1 1/4"	1.69	3.74	0.60
79055	1 1/2"	2.09	4.92	0.96
79060	2"	2.56	5.71	1.87

*Zero Lead identifies Viega® products meeting the lead free requirements of NSF 61-G through testing under NSF/ANSI 372 (0.25% or less maximum weighted average lead content).

Submittal Package



Viega ProPress® Ball Valve

Model 2973

Description

Viega ProPress model 2973 is a full port ball valve intended for hydronic and non-potable applications. The ball valve features EPDM sealing elements, EPDM stem seals and Viega's Smart Connect® technology for easy identification of unpressed connections during pressure testing.

Features

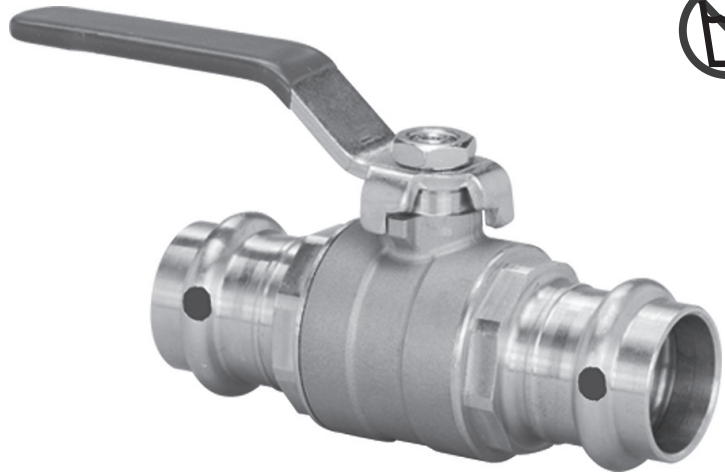
- Chrome-plated brass ball
- Blowout-proof stem
- Reinforced PTFE seats
- Smart Connect technology
- ProPress connections

Ratings

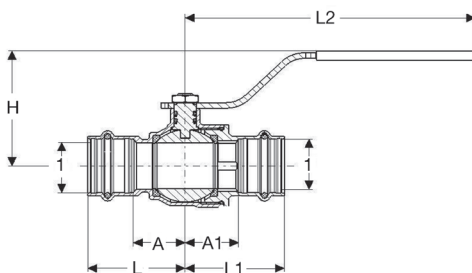
- 250 CWP
- Temperature range: 0°F - 250°F
- Max. operating pressure: 200 psi

Approvals

- Conforms to MSS SP-110
- NSF-U.P. Code
- IGC-157



Component	Material
Body	Brass C37700
Ball	Chrome-plated Brass
Seat	Reinforced PTFE
Stem	Brass C37700
Stem Seals	EPDM
Nut	Zinc-plated Steel
Handle	Zinc-plated Steel
Handle Cover	Polyvinyl
Sealing Element	EPDM



Part Number	1	A (in)	A1 (in)	L (in)	L1 (in)	L2 (in)	H (in)
24000	1/2"	0.83	0.83	1.58	1.58	3.94	1.69
24005	3/4"	0.95	0.95	1.86	1.86	4.72	1.97
24010	1"	1.18	1.18	2.09	2.09	4.72	2.13
24015	1 1/4"	1.29	1.29	2.31	2.31	6.22	2.87
24020	1 1/2"	1.39	1.39	2.81	2.81	6.22	3.11
24025	2"	1.85	1.85	3.43	3.43	6.22	3.46

NOTE: Model 2973 is for use in non-potable applications. For NSF-61G compliant valves refer to Viega ProPress models 2971.1ZL and 2971.3ZL

Submittal Package

viega

Viega ProPress® Ball Valve Model 2973.1

Description

Viega ProPress model 2973.1 is a full port ball valve intended for hydronic and non-potable applications. The ball valve features EPDM sealing elements, EPDM stem seals and Viega's Smart Connect® technology for easy identification of unpressed connections during pressure testing.

Features

- Chrome-plated brass ball
- Blowout-proof stem
- Reinforced PTFE seats
- Smart Connect technology
- Press x FPT connections

Ratings

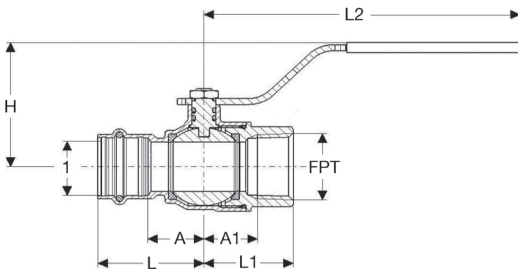
- 250 CWP
- Temperature range: 0°F - 250°F
- Max. operating pressure: 200 psi

Approvals

- Conforms to MSS SP-110
- NSF-U.P. Code
- IGC-157



Component	Material
Body	Brass C37700
Ball	Chrome-plated Brass
Seat	Reinforced PTFE
Stem	Brass C37700
Stem Seals	EPDM
Nut	Zinc-plated Steel
Handle	Zinc-plated Steel
Handle Cover	Polyvinyl
Sealing Element	EPDM



Part Number	1 x FPT	A (in)	A1 (in)	L (in)	L1 (in)	L2 (in)	H (in)
24030	1/2" x 1/2"	0.83	0.63	1.58	1.16	3.94	1.69
24035	3/4" x 3/4"	0.95	0.71	1.86	1.26	4.72	1.97
24040	1" x 1"	1.18	0.93	2.09	1.59	4.72	2.13

NOTE: Model 2973 is for use in non-potable applications. For NSF-61G compliant valves refer to Viega ProPress model 2971.4ZL.

Submittal Package

viega

Viega ProPress® Ball Valve Model 2973.3

Description

Viega ProPress model 2973.3 is a full port ball valve intended for hydronic and non-potable applications. The ball valve features EPDM sealing elements, EPDM stem seals and Viega's Smart Connect® technology for easy identification of unpressed connections during pressure testing.

Features

- Chrome-plated brass ball
- Blowout-proof stem
- Reinforced PTFE seats
- Smart Connect technology
- Press x garden hose connections
- Hose cap is full pressure rated

Ratings

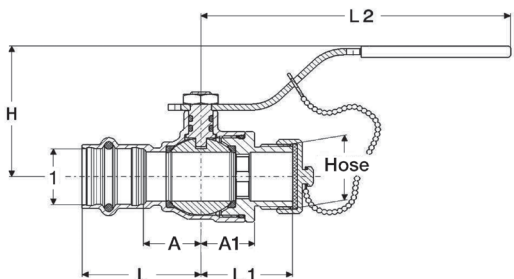
- 250 CWP
- Temperature range: 0°F - 250°F
- Max. operating pressure: 200 psi

Approvals

- Conforms to MSS SP-110
- NSF-U.P. Code
- IGC-157



Component	Material
Body	Brass C37700
Ball	Chrome-plated Brass
Seat	Reinforced PTFE
Stem	Brass C37700
Stem Seals	EPDM
Nut	Zinc-plated Steel
Handle	Zinc-plated Steel
Handle Cover	Polyvinyl
Sealing Element	EPDM



Part Number	1 x Hose	A (in)	A1 (in)	L (in)	L1 (in)	L2 (in)	H (in)
24090	1/2" x 3/4"	0.83	0.85	1.58	1.30	3.89	1.67
24095	3/4" x 3/4"	0.95	0.95	1.86	1.39	4.72	1.97

NOTE: Model 2973 is for use in non-potable applications. For NSF-61G compliant valves refer to Viega ProPress model 2971.6ZL.

Submittal Package

viega

ProPress® 316 Stainless Ball Valve Model 4070

Description

Viega's ProPress 316 stainless steel ball valve can be used in a variety of commercial and industrial applications. The EPDM sealing elements make it the perfect choice for potable water systems while the durable 316 stainless steel allows it to stand up to some of the harshest environments found in power plants, refineries, utilities, and mills. The double EPDM stem seals prevent leaks without the need for constant adjustment. The 316 stainless steel ball valves are available in sizes ranging from ½" to 2" and are equipped with Viega's patented Smart Connect technology for easy identification of unpressed connections during pressure testing.

Features

- ProPress press ends
- 316 Stainless Steel ball and stem
- Full port, two piece design
- Blowout-proof stainless steel stem
- Reinforced PTFE seats
- Lockable metal handle

Ratings

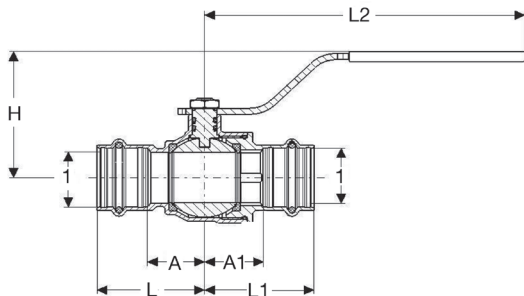
- 250 CWP
- Temperature Range: 0°F to 250°F
- Max. operating pressure: 200 psi

Approvals

- Conforms to MSS SP-110
- NSF-61 Annex G
- NSF-372



Component	Material
Body	316 Stainless Steel
Ball	316 Stainless Steel
Seat	Reinforced PTFE
Stem	316 Stainless Steel
Stem Seals	EPDM
Nut	Zinc plated Steel
Handle	Zinc plated Steel
Handle Cover	Polyvinyl
Sealing Element	EPDM



Stock Code	Size (1)	A (in)	A1 (in)	L (in)	L1 (in)	L2 (in)	H (in)
81080	½"	0.89	1.17	1.64	1.92	5.55	2.44
81085	¾"	1.06	1.36	1.97	2.26	5.55	2.52
81090	1"	1.18	1.57	2.09	2.48	5.55	2.68
81095	1¼"	1.45	1.72	2.48	2.75	6.10	3.09
81100	1½"	1.83	1.81	3.26	3.24	6.10	3.34
81105	2"	1.97	2.18	3.54	3.78	6.10	3.66

Submittal Package

viega

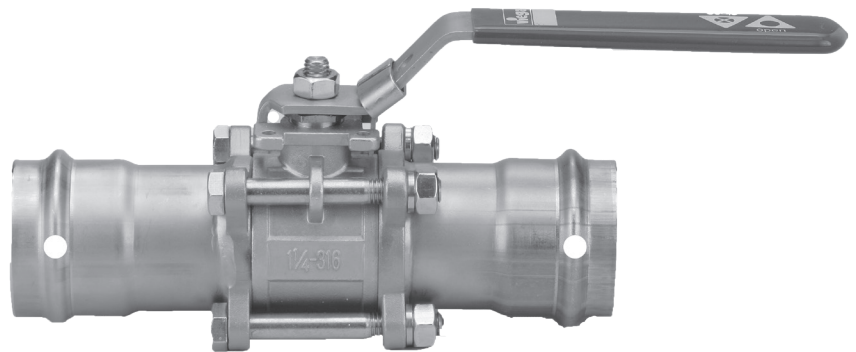
ProPress 3-Piece Stainless Steel Ball Valve Model 4370.8

Description

The ProPress® 3-Piece Stainless Steel ball valve is equipped with a full port, 316 stainless steel 3-piece body. The ball valve features FKM sealing elements, PTFE stem seals, lockable metal handle and Viega's Smart Connect® technology for easy identification of unpressed connections during pressure testing.

Features

- 316 stainless steel ball
- Blowout-proof 316 stainless steel stem
- 304 stainless steel locking handle
- Adjustable packing nut
- Reinforced PTFE seats
- Smart Connect technology
- ISO 5211 mounting pad



Ratings

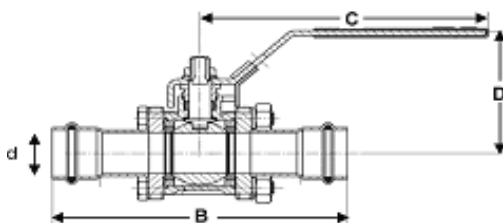
- 250 CWP
- Max. operating pressure: 200 psi
- Temperature range: 0°F to 250°F

Approvals

- Conforms to MSS SP-110



VALVE SIZE	Valve Body Bolt & Nut Size		Bolt Torque +/- 5		Valve Stem Nut Size	Stem Nut	
			ft/lbs	(Nm)		ft/lbs	(Nm)
1/2"	M8 x 45	M8	7.5	(10)	AF 16 mm	7.5	10
3/4"	M8 x 56	M8	7.5	(10)	AF 18 mm	7.5	10
1"	M8 x 65	M8	15	(20)	AF 21 mm	11	15
1 1/4"	M10 x 75	M10	15	(20)	AF 22 mm	11	15
1 1/2"	M10 x 90	M10	22.5	(30)	AF 24 mm	18.5	25
2"	M10 x 100	M10	22.5	(30)	AF 24 mm	18.5	25










Part No.	d	B (in)	C (in)	D (in)	Weight (lbs)
85132	1/2"	5.41	3.99	2.28	1.59
85133	3/4"	5.79	5.88	2.85	1.96
85134	1"	6.00	5.88	2.93	2.82
85136	1 1/4"	6.61	7.54	3.27	3.71
85137	1 1/2"	7.26	7.54	3.57	5.30
85138	2"	9.67	7.54	3.89	7.78

Submittal Package



Valve Accessories by Model

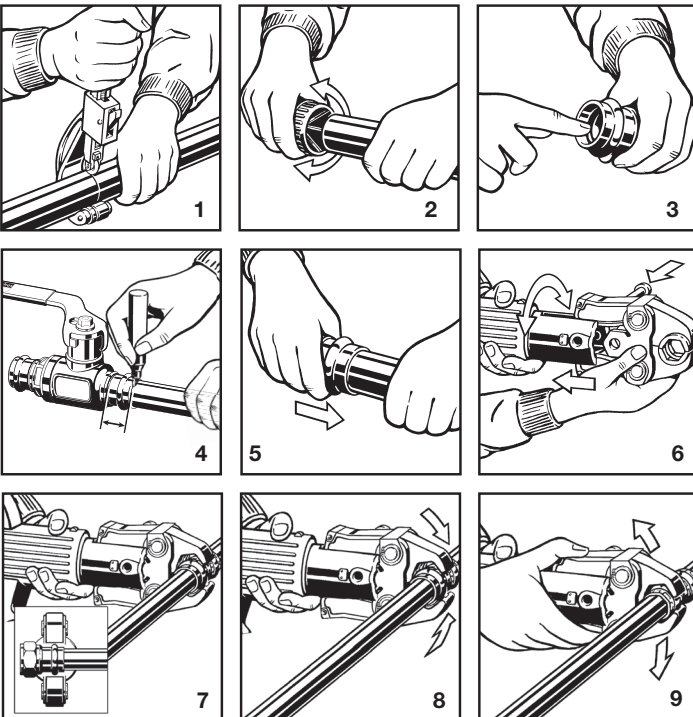
<p>Model 2971.8 Ball Valve Lockable Metal Handle *Use with Models 2971ZL</p>  <p>green</p> <table border="1" data-bbox="555 682 787 760"> <thead> <tr> <th>Part Number</th> <th>Size</th> </tr> </thead> <tbody> <tr> <td>22170</td> <td>½" & ¾"</td> </tr> <tr> <td>22172</td> <td>1" & 1¼"</td> </tr> </tbody> </table>	Part Number	Size	22170	½" & ¾"	22172	1" & 1¼"	<p>Model 2971.96 Ball Valve Stem Extension Kit *Use with Models 2971ZL</p>  <table border="1" data-bbox="1188 676 1432 774"> <thead> <tr> <th>Part Number</th> <th>Size</th> </tr> </thead> <tbody> <tr> <td>23443</td> <td>½" & ¾"</td> </tr> <tr> <td>23445</td> <td>1" & 1¼"</td> </tr> <tr> <td>23447</td> <td>1½" & 2"</td> </tr> </tbody> </table>	Part Number	Size	23443	½" & ¾"	23445	1" & 1¼"	23447	1½" & 2"		
Part Number	Size																
22170	½" & ¾"																
22172	1" & 1¼"																
Part Number	Size																
23443	½" & ¾"																
23445	1" & 1¼"																
23447	1½" & 2"																
<p>Model 2973.8 Ball Valve Metal Handle *Use with Models 2973</p>  <p>red</p> <table border="1" data-bbox="555 987 787 1085"> <thead> <tr> <th>Part Number</th> <th>Size</th> </tr> </thead> <tbody> <tr> <td>22176</td> <td>½"</td> </tr> <tr> <td>22178</td> <td>¾" & 1"</td> </tr> <tr> <td>22180</td> <td>1¼" & 2"</td> </tr> </tbody> </table>	Part Number	Size	22176	½"	22178	¾" & 1"	22180	1¼" & 2"	<p>Model 2973.96 Ball Valve Stem Extension Kit *Use with Models 2973</p>  <table border="1" data-bbox="1188 1068 1432 1167"> <thead> <tr> <th>Part Number</th> <th>Size</th> </tr> </thead> <tbody> <tr> <td>23449</td> <td>½"</td> </tr> <tr> <td>23451</td> <td>¾" & 1"</td> </tr> <tr> <td>23453</td> <td>1¼" to 2"</td> </tr> </tbody> </table>	Part Number	Size	23449	½"	23451	¾" & 1"	23453	1¼" to 2"
Part Number	Size																
22176	½"																
22178	¾" & 1"																
22180	1¼" & 2"																
Part Number	Size																
23449	½"																
23451	¾" & 1"																
23453	1¼" to 2"																
<p>Model 2970.8 Ball Valve Lockable Metal Handle *Use with Model 4070 and 2970ZL</p>  <p>gray</p> <table border="1" data-bbox="532 1381 782 1459"> <thead> <tr> <th>Part Number</th> <th>Size</th> </tr> </thead> <tbody> <tr> <td>22143</td> <td>½", ¾", 1"</td> </tr> <tr> <td>22163</td> <td>1¼", 1½", 2"</td> </tr> </tbody> </table>	Part Number	Size	22143	½", ¾", 1"	22163	1¼", 1½", 2"	<p>Model 2970.96 Ball Valve Stem Extension Kit *Use with Model 4070 and 2970ZL</p>  <table border="1" data-bbox="1188 1383 1437 1461"> <thead> <tr> <th>Part Number</th> <th>Size</th> </tr> </thead> <tbody> <tr> <td>23442</td> <td>½", ¾", 1"</td> </tr> <tr> <td>23444</td> <td>1¼", 1½", 2"</td> </tr> </tbody> </table>	Part Number	Size	23442	½", ¾", 1"	23444	1¼", 1½", 2"				
Part Number	Size																
22143	½", ¾", 1"																
22163	1¼", 1½", 2"																
Part Number	Size																
23442	½", ¾", 1"																
23444	1¼", 1½", 2"																
<p>Model 2959.7 Flange Bolt Set *Use with Model 2873.81</p>  <table border="1" data-bbox="532 1740 782 1839"> <thead> <tr> <th>Part Number</th> <th>Size</th> </tr> </thead> <tbody> <tr> <td>19748</td> <td>1", 1¼", 1½"</td> </tr> <tr> <td>19758</td> <td>2", 2½", 3"</td> </tr> <tr> <td>19763</td> <td>4"</td> </tr> </tbody> </table>	Part Number	Size	19748	1", 1¼", 1½"	19758	2", 2½", 3"	19763	4"									
Part Number	Size																
19748	1", 1¼", 1½"																
19758	2", 2½", 3"																
19763	4"																

Submittal Package



Viega ProPress® Ball Valves

For Types K, L and M Hard Copper Tubing in 1/2" to 2" and Soft Copper Tubing in 1/2" to 1 1/4"



Tube Size	1/2"	3/4"	1"	1 1/4"	1 1/2"	2"
Insertion Depth	3/4"	7/8"	7/8"	1"	1 7/16"	1 9/16"

⚠ WARNING Read and understand all instructions for installing Viega ProPress fittings. Failure to follow all instructions may result in extensive property damage, serious injury or death.

1. Cut copper tubing at right angles using displacement-type cutter or fine-toothed steel saw.
2. Remove burr from inside and outside of tubing to prevent cutting sealing element.
3. Check seal for correct fit. Do not use oils or lubricants. Use only Viega ProPress Shiny Black EPDM or Dull Black FKM sealing elements.
Note: For applications requiring Viega ProPress with FKM sealing elements, remove the factory-installed EPDM sealing element and replace with FKM sealing element.
4. Mark proper insertion depth as indicated by the Viega ProPress Insertion Depth Chart. Improper insertion depth may result in improper seal.
5. While turning slightly, slide ball valve onto tubing to the marked depth.
Note: End of tubing must contact stop.
6. Insert appropriate Viega jaw into the pressing tool and push in, holding pin until it locks in place.
7. Open the jaw and place at right angles on the valve. Visually check insertion depth using mark on tubing.
8. Start pressing process and hold the trigger until the jaw has engaged the valve.
9. After pressing, the jaw can be opened again.

Note: Only ball valves marked with NSF-61G are allowed for use in potable water systems.



Leak Testing with Smart Connect®:

Unpressed connections are located by pressurizing the system with air or water. When testing with water the proper pressure range is 15 psi to 85 psi maximum. Leak testing with air can be dangerous at high pressures. When testing with compressed air the proper pressure range is 1/2 psi to 45 psi maximum. Following a successful leak test, the system may be pressure tested up to 200 psi with air, or up to 600 psi with water, if required by local code requirements or project specifications.

Submittal Package

viega

VIEGA LIMITED WARRANTY PROGRESS® FITTINGS AND VALVES

Subject to the conditions and limitations in this Limited Warranty, Viega LLC (VIEGA) warrants to wholesalers and licensed plumbing and mechanical contractors in the United States and Canada that its PROGRESS fittings, when properly installed in non industrial and non marine applications and under normal conditions of use, will be free of failure from manufacturing defect for a period of fifty (50) years from date of installation and that its PROGRESS valves, when properly installed in non industrial and non marine applications and under normal conditions of use, will be free of failure from manufacturing defect for a period of two (2) years from date of installation.

Under this Limited Warranty, you only have a right to a remedy if the failure or leak resulted from a manufacturing defect in the products covered by this warranty and the failure or leak occurred during the warranty period. You do not have a remedy under this warranty and the warranty does not apply if the failure or any resulting damage is caused by (1) components other than those manufactured or sold by Viega; (2) not designing, installing, inspecting, or testing the ProPress fittings or valves in accordance with Viega's installation instructions in effect at the time of the installation; applicable code requirements; and accepted industry practice; (3) improper handling and protection of the product prior to and during installation, inadequate freeze protection, exposure to water pressures or temperatures or in applications outside acceptable operating conditions; (4) acts of nature such as, but not limited to, earthquakes, fire, flood, or lightning, or (5) external environmental causes, such as water quality variations, aggressive water, or other external chemical or physical conditions.

In the event of a leak or other failure of the parts covered by this warranty, it is the responsibility of the property owner to obtain and pay for repairs. Only if the warranty applies will Viega be responsible for the remedy under this warranty. The part or parts which you claim failed

should be kept and Viega contacted by writing to the address below or telephoning 1-800-976-9819 within thirty (30) days after the leak or other failure and identifying yourself as having a warranty claim. You should be prepared to ship, at your expense, the product which you claim failed due to a manufacturing defect and document the date of installation. Within a reasonable time after receiving the product, Viega will investigate the reasons for the failure, which includes the right to inspect the product at Viega. Viega will notify you in writing of the results of its review.

In the event that Viega determines that the failure or leak was the result of a manufacturing defect in the part covered by this warranty and that this warranty applies, the EXCLUSIVE AND ONLY REMEDY under this warranty shall be the reimbursement for repair and/or replacement of the part. VIEGA SHALL NOT BE LIABLE FOR ANY CONSEQUENTIAL OR OTHER DAMAGE (FOR EXAMPLE, WATER OR PROPERTY OR MOLD REMEDIATION) UNDER ANY LEGAL THEORY AND WHETHER ASSERTED BY DIRECT ACTION, FOR CONTRIBUTION OR INDEMNITY OR OTHERWISE.

THE ABOVE WARRANTY IS IN LIEU OF ALL OTHER WARRANTIES, EXPRESS OR IMPLIED, INCLUDING BUT NOT LIMITED TO THE IMPLIED WARRANTIES OF MERCHANTABILITY AND FITNESS FOR A PARTICULAR PURPOSE. If a limited warranty shall be found to apply, such warranty is limited to four years. Other than this Limited Warranty, Viega does not authorize any person or firm to create for it any other obligation or liability in connection with its products.

This Limited Warranty gives you specific legal rights and you also may have other rights which may vary from state to state. This warranty shall be interpreted and applied under the law of the state in which the product is installed and is intended as a Commercial Warranty.

Viega products are designed to be installed by licensed and trained plumbing and mechanical professionals who are familiar with our products' proper use and installation. *Installation by non-professionals may void Viega LLC's warranty.*

This document is subject to updates. For the most current Viega technical literature please visit www.viega.us.

Viega LLC • 585 Interlocken Blvd. • Broomfield, CO 80021 • Phone (800) 976-9819 • www.viega.us