

Submittal Package

viega



ProPress® System

- | | |
|--|--|
| <input type="checkbox"/> Potable Water | <input type="checkbox"/> Low Pressure Steam |
| <input type="checkbox"/> Hydronic Heating | <input type="checkbox"/> Fire Protection |
| <input type="checkbox"/> Chilled Water | <input type="checkbox"/> Vacuum |
| <input type="checkbox"/> Compressed Air | <input type="checkbox"/> Corgon |
| <input type="checkbox"/> Nitrogen N ₂ | <input type="checkbox"/> Oxygen O ₂ (non medical) |
| <input type="checkbox"/> Argon | <input type="checkbox"/> _____ |

System Data Sheet	2
ProPress Product Instructions	
ProPress for ½" to 2" copper tubing	3
ProPress XL for 2¼" to 4" copper tubing	4
ProPress® Dimensional Documentation	
ProPress for ½" to 2" copper tubing	5
ProPress XL for 2¼" to 4" copper tubing	17
Viega Limited Warranty ProPress® Fittings And Valves	23

Submittal Package

viiega

System Data Sheet

ProPress® and ProPress XL (Copper) are safe, reliable and economical copper pipe installation systems that use modern cold press connection technology.

Viega® ProPress fittings are for use with type K, L and M hard copper tubing from ½" to 4" and soft copper tubing in ½" to 1¼" diameters. All tubing must comply with the ASTM B88 standard. ProPress fittings are approved for installations in both above and below ground applications. Per code, local inspector approval must be obtained prior to installation below ground.

ProPress has been used in Europe since the late 1980s and in the United States since the late 1990s for a variety of applications. Backed by two plumbing leaders with over 175 years of combined excellence.

Listings and Certificates

- NSF 61G
- IAPMO PS117
- UL 213
- FM Class 1920
- ICC LC 1002
- CSA MSE-13
- ABS

International Listings and Certificates

- Deutsch Verein des Gas-und Wasserfachese.V. (DVGW)
- Lloyd's Register (LR)
- Det Norske Veritas (DNV)
- Registro Italiano Navale (RINA)
- Bureau Veritas (BV)
- KIWA

Compliant with:

- ICC International Plumbing Code
- IAPMO Uniform Plumbing Code
- PHCC National Standard Plumbing Code
- Florida Building Code, Volume II Plumbing Code
- NFPA 13, 13D and 13R
- ASME B16.51
- U.S. Coast Guard

Viega ProPress fittings are offered in configurations including: Elbows, Couplings, Reducers, Tees, Reducing Tees, Threaded Adapters, Unions, Caps and Flanges. All threaded ½" to 2" fittings are Zero Lead bronze.

Operating Parameters

Operating Pressure: 200 PSI maximum
Test Pressure: 600 PSI maximum
Operating Temperature: 0°F to 250°F



Approved Applications:

- Potable Water
- Hydronic Heating (w/ Glycol)
- Chilled Water
- Compressed Air
- Non-medical Gases
- Fire Sprinkler (175 PSI maximum)
- Low Pressure Steam (15 PSI maximum)
- Vacuum (29.2 in. Hg maximum @ 68°F)

In ProPress ½" to 4" dimensions, Smart Connect technology assures leakage of liquids and/or gases from inside the system past the sealing element of an unpressed connection. The function of this feature is to provide the installer quick and easy identification of connections which have not been pressed prior to putting the system into operation.

Recommended Tools:

- RIDGID RP 200-B (½" to 1¼")
- RIDGID RP 210-B (½" to 1¼")
- RIDGID RP 320-E
- RIDGID RP 330-B or 330-C
- RIDGID RP 340
- RIDGID CT 400

Contact your local Viega representative for details on local approvals.

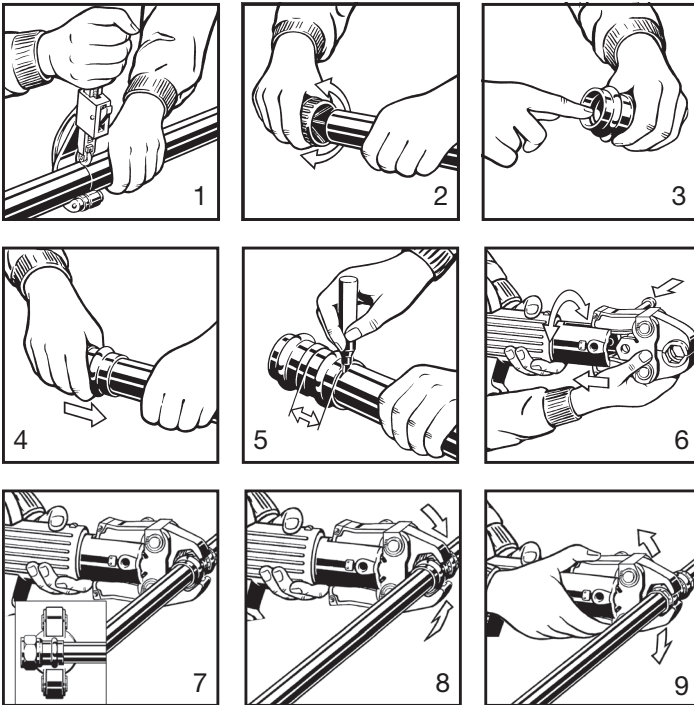
Submittal Package

viega

ProPress Product Instructions

Viega ProPress®

For Types K, L and M Hard Copper Tubing in 1/2" to 2" and Soft Copper Tubing in 1/2" to 1 1/4"



⚠ WARNING Read and understand all instructions for installing Viega ProPress fittings. Failure to follow all instructions may result in extensive property damage, serious injury or death.

1. Cut copper tubing at right angles using displacement-type cutter or fine-toothed steel saw.
2. Remove burr from inside and outside of tubing to prevent cutting sealing element.
3. Check seal for correct fit. Do not use oils or lubricants. Use only Viega ProPress Shiny Black EPDM or Dull Black FKM sealing elements.
Note: For applications requiring Viega ProPress with FKM sealing elements, remove the factory-installed EPDM sealing element and replace with FKM sealing element.
4. Mark proper insertion depth as indicated by the Viega ProPress Insertion Depth Chart. Improper insertion depth may result in improper seal.
5. While turning slightly, slide press fitting onto the tubing to the marked depth.
Note: End of tubing must contact stop.
6. Insert appropriate Viega jaw into the pressing tool and push in, holding pin until it locks in place.
7. Open the jaw and place at right angles on the fitting. Visually check insertion depth using mark on tubing.
8. Start pressing process and hold the trigger until the jaw has engaged the fitting.
9. After pressing, the jaw can be opened again.

Viega ProPress Insertion Depth Chart

Tube Size	1/2"	3/4"	1"	1 1/4"	1 1/2"	2"
Insertion Depth	3/4"	7/8"	7/8"	1"	17/16"	1 9/16"



Leak Testing with Smart Connect®:

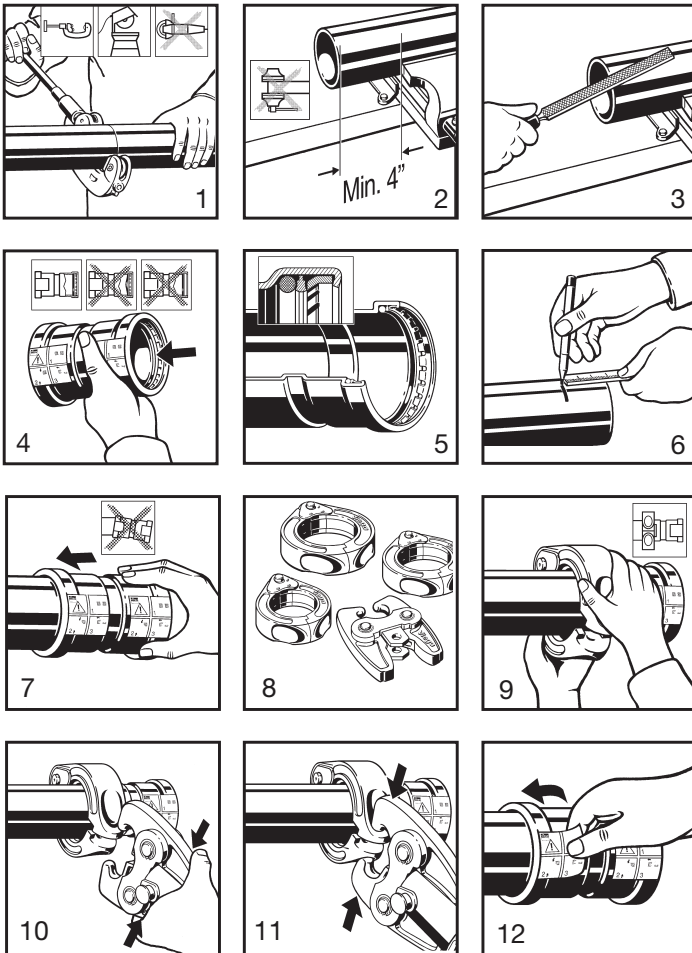
Unpressed connections are located by pressurizing the system with air or water. When testing with water the proper pressure range is 15 psi to 85 psi maximum. Leak testing with air can be dangerous at high pressures. When testing with compressed air the proper pressure range is 1/2 psi to 45 psi maximum. Following a successful leak test, the system may be pressure tested up to 200 psi with air, or up to 600 psi with water, if required by local code requirements or project specifications.

Submittal Package



Viega ProPress® XL (Copper)

For Types K, L and M Hard Copper Tubing in 2½" to 4"



⚠ WARNING Read, understand and follow all instructions for installing ProPress XL (copper) fittings. Failure to follow all instructions may result in extensive property damage, serious injury or death.

1. Cut copper tubing at right angles using displacement-type cutter or fine-toothed steel saw.
2. Keep end of tubing a minimum of 4" away from the contact area of the vise to prevent possible damage to the tubing in the press area.
3. Remove burr from inside and outside of tubing to prevent cutting sealing element.
4. Check seal and grip ring for correct fit. Do not use oils or lubricants. Use only ProPress Shiny Black EPDM sealing elements.
5. Illustration demonstrates proper fit of grip ring, separation ring and sealing element.
6. Mark proper insertion depth as indicated by the ProPress XL (copper) Insertion Depth Chart. Improper insertion depth may result in an improper seal.
7. While turning slightly, slide press fitting onto tubing to the marked depth. End of tubing must contact stop.
8. ProPress XL (copper) fitting connections must be performed with ProPress XL-C Rings and V2 ACTUATOR. Use of ProPress XL Rings and/or Actuator (for Bronze fittings) will result in an improper connection. See Ridgid Operator's Manual for proper tool instructions.
9. Open XL-C Ring and place at right angles on the fitting. XL-C Ring must be engaged on the fitting bead. Check insertion depth.
10. With V2 ACTUATOR inserted into the tool, open the V2 ACTUATOR as shown and connect V2 ACTUATOR to the XL-C Ring.
11. Place V2 ACTUATOR onto XL-C Ring and start pressing process. Hold the trigger until the Actuator has engaged the XL-C Ring. Keep extremities and foreign objects away from XL-C Ring and V2 ACTUATOR during pressing operation to prevent injury or incomplete press.
12. Release V2 ACTUATOR from XL-C Ring and then remove the XL-C Ring from the fitting on completion of press. Remove tag from fitting, indicating press has been performed.

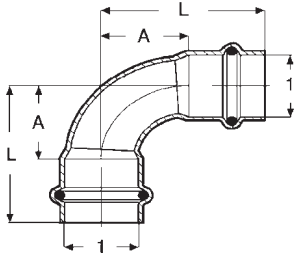
ProPress XL (copper) Insertion Depth Chart			
Tube Size	2½"	3"	4"
Insertion Depth	1 ¹ / ₁₆ "	1 ¹⁵ / ₁₆ "	2 ³ / ₈ "

Leak Testing with Smart Connect®: Unpressed connections are located by pressurizing the system with air or water. When testing with water the proper pressure range is 15 psi to 85 psi. Leak testing with air can be dangerous at high pressures. When testing with compressed air the proper pressure range is ½ psi to 45 psi. Following a successful leak test, the system may be pressure tested up to 200 psi with air, or up to 600 psi with water, if required by local code requirements or project specifications.

Submittal Package

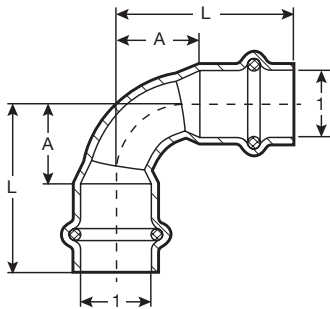
viega

ProPress® Dimensional Documentation ProPress for 1/2" to 2" copper tubing



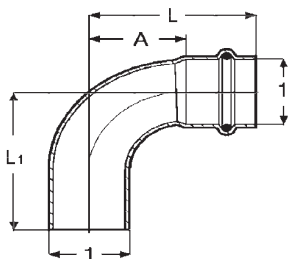
Viega ProPress 90° Elbow Copper P x P - Model 2916

Part No.	Size		A (in)	L (in)
	1	1		
77317	1/2"	1/2"	0.75	1.50
77322	3/4"	3/4"	1.04	1.94
77327	1"	1"	1.32	2.23
77332	1 1/4"	1 1/4"	1.65	2.68
77337	1 1/2"	1 1/2"	1.98	3.40
77342	2"	2"	2.54	4.13



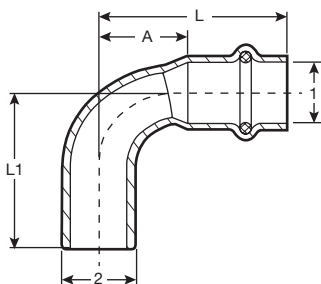
Viega ProPress 90° Elbow Copper P x P - Model 2916 Short

Part No.	Size		A (in)	L (in)
	1	1		
77317	1/2"	1/2"	0.75	1.50
77022	3/4"	3/4"	0.76	1.67
77027	1"	1"	1.28	2.19
77032	1 1/4"	1 1/4"	1.28	2.31
77037	1 1/2"	1 1/2"	1.29	2.72
77042	2"	2"	2.16	3.74



Viega ProPress 90° Street Elbow Copper P x FTG - Model 2916.1

Part No.	Size		A (in)	L (in)	L1 (in)
	1	2			
77347	1/2"	1/2"	0.75	1.50	1.54
77352	3/4"	3/4"	1.04	1.94	1.98
77357	1"	1"	1.32	2.23	2.27
77362	1 1/4"	1 1/4"	1.65	2.68	2.76
77367	1 1/2"	1 1/2"	1.98	3.40	3.48
77372	2"	2"	2.54	4.13	4.20



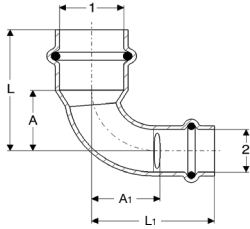
Viega ProPress 90° Street Elbow Copper P x FTG - Model 2916.1 Short

Part No.	Size		A (in)	L (in)	L1 (in)
	1	2			
77347	1/2"	1/2"	0.75	1.50	1.54
77052	3/4"	3/4"	0.76	1.67	1.83
77057	1"	1"	1.28	2.19	2.27
77062	1 1/4"	1 1/4"	1.28	2.31	2.48
77067	1 1/2"	1 1/2"	1.29	2.72	2.80
77072	2"	2"	2.16	3.74	3.78

Viega LLC • 585 Interlocken Blvd. • Broomfield, CO 80021 • Phone (800) 976-9819 • www.viega.us

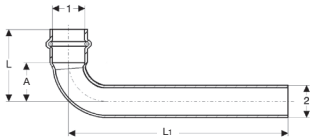
Submittal Package

viega



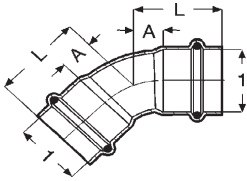
Viega ProPress 90° Reducing Elbow Copper P x P - Model 2916.3

Part No.	Size		A (in)	A1 (in)	L (in)	L1 (in)
	1	2				
77325	3/4" x 1/2"		0.91	0.94	1.81	1.69
77330	1" x 3/4"		1.20	1.30	2.11	2.21



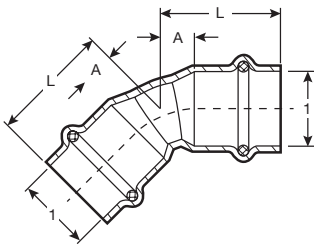
Viega ProPress 90° Extended Street Elbow Copper P x FTG - Model 2947

Part No.	Size		A (in)	L (in)	L1 (in)
	1	2			
77353	3/4" x 3/4"		1.02	1.93	5.98



Viega ProPress 45° Elbow Copper P x P - Model 2926

Part No.	Size		A (in)	L (in)
	1	1		
77607	1/2" x 1/2"		0.30	1.04
77612	3/4" x 3/4"		0.43	1.34
77617	1" x 1"		0.55	1.46
77622	1 1/4" x 1 1/4"		0.68	1.71
77627	1 1/2" x 1 1/2"		0.81	2.24
77632	2" x 2"		1.05	2.63

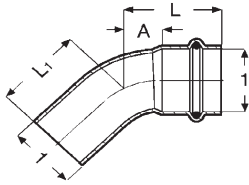


Viega ProPress 45° Elbow Copper P x P - Model 2926 Short

Part No.	Size		A (in)	L (in)
	1	1		
77607	1/2" x 1/2"		0.30	1.04
77023	3/4" x 3/4"		0.36	1.26
77028	1" x 1"		0.47	1.38
77033	1 1/4" x 1 1/4"		0.58	1.61
77038	1 1/2" x 1 1/2"		0.65	2.08
77043	2" x 2"		0.86	2.44

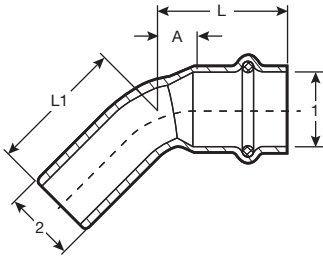
Submittal Package

viega



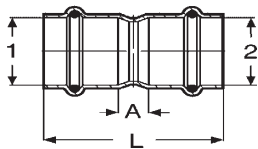
Viega ProPress 45° Street Elbow Copper P x FTG - Model 2926.1

Part No.	Size		A (in)	L (in)	L1 (in)
	1	2			
77637	1/2"	1/2"	0.31	1.06	1.10
77642	3/4"	3/4"	0.43	1.34	1.37
77647	1"	1"	0.55	1.46	1.49
77652	1 1/4"	1 1/4"	0.68	1.71	1.79
77657	1 1/2"	1 1/2"	0.81	2.24	2.32
77662	2"	2"	1.05	2.63	2.71



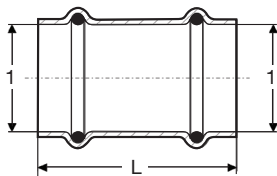
Viega ProPress 45° Street Elbow Copper P x FTG - Model 2926.1 Short

Part No.	Size		A (in)	L (in)	L1 (in)
	1	2			
77637	1/2"	1/2"	0.31	1.06	1.10
77053	3/4"	3/4"	0.36	1.26	1.30
77058	1"	1"	0.47	1.38	1.49
77063	1 1/4"	1 1/4"	0.58	1.61	1.67
77068	1 1/2"	1 1/2"	0.65	2.08	2.04
77073	2"	2"	0.86	2.44	2.54



Viega ProPress Coupling with Stop Copper P x P - Model 2915

Part No.	Size		A (in)	L (in)
	1	1		
78047	1/2"	1/2"	0.12	1.61
78052	3/4"	3/4"	0.20	2.01
78057	1"	1"	0.16	1.97
78062	1 1/4"	1 1/4"	0.14	2.20
78067	1 1/2"	1 1/2"	0.14	2.99
78072	2"	2"	0.14	3.31

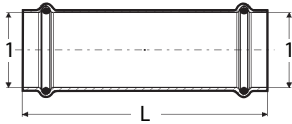


Viega ProPress Coupling No Stop Copper P x P - Model 2915.3

Part No.	Size		L (in)
	1	1	
78172	1/2"	1/2"	1.61
78177	3/4"	3/4"	2.01
78182	1"	1"	1.97
78187	1 1/4"	1 1/4"	2.20
78192	1 1/2"	1 1/2"	2.99
78197	2"	2"	3.31

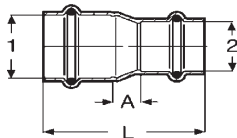
Submittal Package

viega



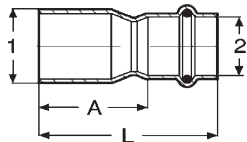
Viega ProPress Extended Coupling Copper P x P - Model 2915.5

Part No.	Size	L (in)
	1 1	
79005	1/2" x 1/2"	2.99
79010	3/4" x 3/4"	3.50
79015	1" x 1"	3.74
79020	1 1/4" x 1 1/4"	4.13
79025	1 1/2" x 1 1/2"	4.72
79030	2" x 2"	5.31



Viega ProPress Reducer Copper P x P - Model 2915.2

Part No.	Size	A (in)	L (in)
	1 2		
78147	3/4" x 1/2"	0.42	2.07
15603	1" x 1/2"	0.71	2.36
78152	1" x 3/4"	0.48	2.29
15593	1 1/4" x 3/4"	0.70	2.64
78157	1 1/4" x 1"	0.55	2.48
18473	1 1/2" x 3/4"	0.98	3.33
15588	1 1/2" x 1"	0.74	3.07
78162	1 1/2" x 1 1/4"	0.50	2.96
18468	2" x 3/4"	1.54	4.02
15608	2" x 1"	1.29	3.78
22328	2" x 1 1/4"	0.81	3.43
78167	2" x 1 1/2"	0.74	3.75

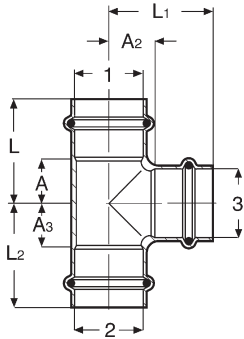


Viega ProPress Reducer Copper FTG x P - Model 2915.1

Part No.	Size	A (in)	L (in)
	1 2		
78077	3/4" x 1/2"	1.42	2.17
78082	1" x 1/2"	1.69	2.44
78087	1" x 3/4"	1.42	2.32
22333	1 1/4" x 1/2"	1.91	2.74
78092	1 1/4" x 3/4"	1.85	2.76
78097	1 1/4" x 1"	1.57	2.48
14543	1 1/2" x 3/4"	2.56	3.46
78102	1 1/2" x 1"	2.28	3.19
78107	1 1/2" x 1 1/4"	2.04	3.07
78112	2" x 1"	3.03	3.94
78117	2" x 1 1/4"	2.79	3.82
78122	2" x 1 1/2"	2.63	4.06

Submittal Package

viega



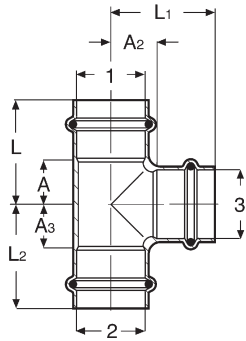
Viega ProPress Tee Copper P x P x P - Model 2918

Part No.	Size			A (in)	A1 (in)	A2 (in)	L (in)	L1 (in)	L2 (in)
	1	2	3						
77377	1/2"	1/2"	1/2"	0.75	0.75	0.50	1.50	1.50	1.25
77382	1/2"	1/2"	3/4"	0.91	0.91	0.59	1.65	1.65	1.50
15493	1/2"	1/2"	1"	1.10	1.10	0.55	1.85	1.85	1.46
77387	3/4"	3/4"	3/4"	0.85	0.85	0.59	1.75	1.75	1.50
77392	3/4"	1/2"	1/2"	0.69	0.98	0.63	1.59	1.73	1.38
77397	3/4"	1/2"	3/4"	0.85	1.14	0.59	1.75	1.89	1.50
77402	3/4"	3/4"	1/2"	0.69	0.69	0.63	1.59	1.59	1.38
77407	3/4"	3/4"	1"	0.97	0.97	0.63	1.87	1.87	1.54
77412	1"	1"	1"	0.97	0.97	0.79	1.87	1.87	1.69
22263	1"	1/2"	3/4"	0.85	1.24	0.75	1.76	1.99	1.66
94767	1"	1/2"	1"	0.97	1.52	0.79	1.87	2.26	1.69
77417	1"	3/4"	1/2"	0.69	0.89	0.79	1.59	1.79	1.54
77422	1"	3/4"	3/4"	0.85	1.04	0.75	1.75	1.95	1.65
77427	1"	3/4"	1"	0.97	1.18	0.78	1.87	2.07	1.69
77432	1"	1"	1/2"	0.69	0.69	0.79	1.59	1.59	1.54
77437	1"	1"	3/4"	0.85	0.85	0.75	1.75	1.75	1.65
15488	1"	1"	1 1/4"	1.16	1.16	0.84	2.07	2.07	1.87
77442	1 1/4"	1 1/4"	1 1/4"	1.02	1.02	0.86	2.05	2.05	1.89
22253	1 1/4"	1/2"	1 1/4"	1.02	1.77	0.87	2.05	2.52	1.89
22243	1 1/4"	3/4"	1/2"	0.64	1.13	0.93	1.68	2.03	1.68
22258	1 1/4"	3/4"	3/4"	0.76	1.30	0.87	1.80	2.21	1.78
22268	1 1/4"	3/4"	1"	0.88	1.40	0.91	1.91	2.31	1.82
22248	1 1/4"	3/4"	1 1/4"	1.02	1.54	0.86	2.05	2.45	1.89
22238	1 1/4"	1"	1/2"	0.64	0.91	0.93	1.68	1.82	1.68
94762	1 1/4"	1"	3/4"	0.76	1.14	0.87	1.79	2.05	1.77
14568	1 1/4"	1"	1"	0.88	1.28	0.91	1.91	2.19	1.81
94757	1 1/4"	1 1/4"	1/2"	0.65	0.65	0.93	1.67	1.67	1.67
77452	1 1/4"	1 1/4"	3/4"	0.77	0.77	0.89	1.79	1.79	1.77
77447	1 1/4"	1 1/4"	1"	0.88	0.88	0.90	1.91	1.91	1.81
77457	1 1/2"	1 1/2"	1 1/2"	1.13	1.13	1.13	2.56	2.56	2.56
79660	1 1/2"	1"	3/4"	0.67	1.39	1.16	2.17	2.44	2.05
15458	1 1/2"	1"	1"	0.74	1.54	1.06	2.17	2.44	1.97
15463	1 1/2"	1"	1 1/2"	1.13	1.83	1.13	2.56	2.74	2.56
22233	1 1/2"	1 1/4"	3/4"	0.67	1.08	1.15	2.09	2.11	2.05
15453	1 1/2"	1 1/4"	1"	0.74	1.29	1.18	2.17	2.32	2.09
15483	1 1/2"	1 1/4"	1 1/4"	0.86	1.33	1.13	2.28	2.36	2.17
15448	1 1/2"	1 1/2"	1/2"	0.47	0.47	1.10	1.89	1.89	1.85
77462	1 1/2"	1 1/2"	3/4"	0.66	0.66	1.14	2.09	2.09	2.05
77467	1 1/2"	1 1/2"	1"	0.74	0.74	1.18	2.17	2.17	2.09
77472	1 1/2"	1 1/2"	1 1/4"	0.86	0.86	1.13	2.28	2.28	2.17
77477	2"	2"	2"	1.37	1.37	1.37	2.95	2.95	2.95
15518	2"	1 1/4"	1 1/4"	0.94	1.84	1.33	2.52	2.87	2.36
15513	2"	1 1/2"	3/4"	0.70	1.25	1.38	2.28	2.68	2.28
15498	2"	1 1/2"	1"	0.82	1.45	1.38	2.40	2.87	2.28
15508	2"	1 1/2"	1 1/4"	0.94	1.55	1.49	2.52	2.97	2.52

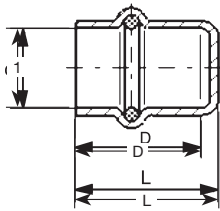
Continued on next page

Submittal Package

viega

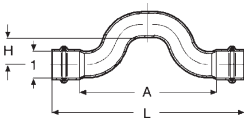


Copper Tee P x P x P - Model 2918 (continued)									
Part No.	Size			A (in)	A1 (in)	A2 (in)	L (in)	L1 (in)	L2 (in)
	1	2	3						
15503	2" x 1½" x 1½"			1.13	1.65	1.37	2.72	3.07	2.80
22228	2" x 1½" x 2"			1.38	1.89	1.38	2.95	3.33	2.95
15538	2" x 2" x ½"			0.54	0.54	1.30	2.13	2.13	2.05
94777	2" x 2" x ¾"			0.79	0.79	1.26	2.37	2.37	2.17
94772	2" x 2" x 1"			0.91	0.91	1.30	2.49	2.49	2.21
77487	2" x 2" x 1¼"			1.04	1.04	1.37	2.62	2.62	2.40
77482	2" x 2" x 1½"			1.13	1.13	1.37	2.72	2.72	2.80



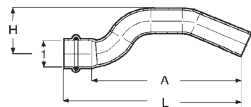
Viega ProPress Cap Copper P - Model 2956

Part No.	Size	L (in)	D (in)
	1		
77712	½"	0.92	0.79
77717	¾"	1.07	0.94
77722	1"	1.11	0.99
77727	1¼"	1.32	1.20
77732	1½"	1.62	1.49
77737	2"	1.81	1.69



Viega ProPress Cross-Over Copper P x P - Model 2928

Part No.	Size	A (in)	L (in)	H (in)
	1 1			
77742	½" x ½"	3.62	5.12	0.77
77747	¾" x ¾"	4.49	6.30	0.90



Viega ProPress Cross-Over Copper P x FTG - Model 2927

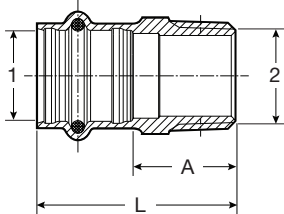
Part No.	Size	A (in)	L (in)	H (in)
	1 2			
78137	½" x ½"	3.83	4.58	1.10
78142	¾" x ¾"	4.64	5.54	1.54

Submittal Package

viega

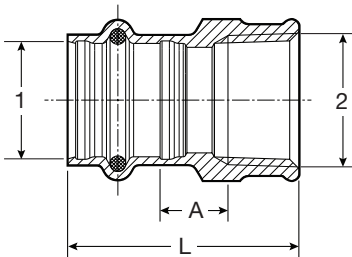


Viega ProPress Adapter Zero Lead Bronze P x MPT - Model 2911ZL



Part No.	Size		A (in)	L (in)
	1	2		
79210	1/2"	3/8" MPT	0.77	1.59
79215	1/2"	1/2" MPT	0.89	1.71
79220	1/2"	3/4" MPT	1.00	1.83
79225	3/4"	1/2" MPT	1.02	1.93
79230	3/4"	3/4" MPT	1.02	1.93
79235	3/4"	1" MPT	1.18	2.09
79240	1"	3/4" MPT	1.18	2.09
79245	1"	1" MPT	1.26	2.17
79250	1"	1 1/4" MPT	1.54	2.44
79255	1 1/4"	1" MPT	1.22	2.24
79260	1 1/4"	1 1/4" MPT	1.34	2.36
79265	1 1/4"	1 1/2" MPT	1.48	2.50
79270	1 1/2"	1 1/4" MPT	1.34	2.76
79275	1 1/2"	1 1/2" MPT	1.28	2.70
79280	1 1/2"	2" MPT	1.65	3.07
79285	2"	1 1/2" MPT	1.54	3.11
79290	2"	2" MPT	1.50	3.07

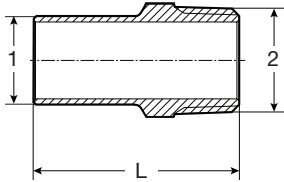
Viega ProPress Adapter Zero Lead Bronze P x FPT - Model 2912ZL



Part No.	Size		A (in)	L (in)
	1	2		
79295	1/2"	3/8" FPT	0.19	1.42
79300	1/2"	1/2" FPT	0.25	1.61
79305	1/2"	3/4" FPT	0.27	1.65
79310	3/4"	1/2" FPT	0.33	1.77
79315	3/4"	3/4" FPT	0.35	1.81
79320	1"	1/2" FPT	0.41	1.85
79325	1"	3/4" FPT	0.39	1.85
79330	1"	1" FPT	0.44	2.01
79335	1"	1 1/4" FPT	0.50	2.09
79340	1 1/4"	1/2" FPT	0.37	1.93
79345	1 1/4"	1" FPT	0.24	1.93
79350	1 1/4"	1 1/4" FPT	0.34	2.05
79355	1 1/4"	1 1/2" FPT	0.42	2.13
79360	1 1/2"	1 1/4" FPT	0.26	2.36
79365	1 1/2"	1 1/2" FPT	0.34	2.44
79370	2"	2" FPT	0.41	2.68

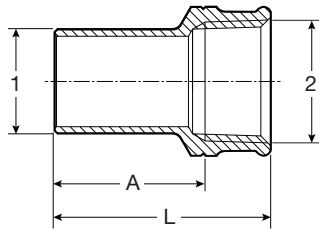
Submittal Package

viega



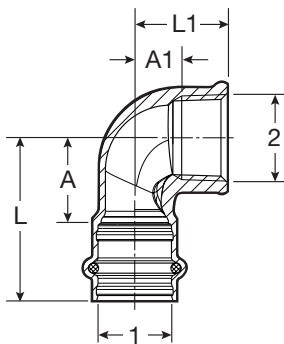
Viega ProPress Adapter Zero Lead Bronze FTG x MPT - Model 2911.1ZL

Part No.	Size		L (in)
	1	2	
79375	1/2"	3/8" MPT	1.75
79380	1/2"	1/2" MPT	1.95
79385	1/2"	3/4" MPT	2.05
79390	3/4"	1/2" MPT	1.93
79395	3/4"	3/4" MPT	2.05
79400	1"	3/4" MPT	2.05
79405	1"	1" MPT	2.22
79410	1 1/4"	1 1/4" MPT	2.54
79415	1 1/2"	1 1/2" MPT	2.89
79420	2"	2" MPT	3.33



Viega ProPress Adapter Zero Lead Bronze FTG x FPT - Model 2912.1ZL

Part No.	Size		A (in)	L (in)
	1	2		
79425	1/2"	3/8" FPT	1.10	1.54
79430	1/2"	1/2" FPT	1.22	1.75
79435	1/2"	3/4" FPT	1.30	1.83
79440	3/4"	1/2" FPT	1.26	1.79
79445	3/4"	3/4" FPT	1.28	1.83
79455	1"	1/2" FPT	1.35	1.99
79450	1"	1" FPT	1.33	1.99
79460	1 1/4"	1/2" FPT	1.65	2.19
79465	1 1/4"	1 1/4" FPT	1.50	2.19
79470	1 1/2"	1 1/2" FPT	1.88	2.56
79475	2"	2" FPT	2.13	2.95

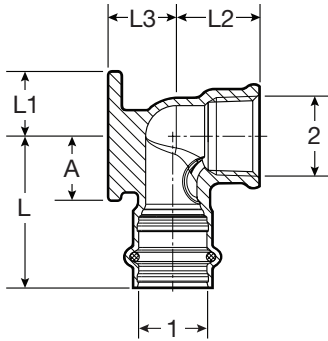


Viega ProPress 90° Elbow Zero Lead Bronze P x FPT - Model 2914.2ZL

Part No.	Size		A (in)	A1 (in)	L (in)	L1 (in)
	1	2				
79520	1/2"	3/8" FPT	0.94	0.42	1.77	0.83
79525	1/2"	1/2" FPT	0.94	0.57	1.77	1.10
79530	1/2"	3/4" FPT	1.06	0.51	1.89	1.06
79535	3/4"	1/2" FPT	1.06	0.65	1.97	1.18
79540	3/4"	3/4" FPT	1.06	0.57	1.97	1.12
79545	1"	1/2" FPT	1.06	0.72	1.97	1.26
79550	1"	1" FPT	1.34	0.76	2.24	1.42
79560	1 1/4"	1 1/4" FPT	1.54	0.89	2.56	1.57
79565	1 1/2"	1 1/2" FPT	1.69	1.05	3.11	1.73
79570	2"	2" FPT	2.17	1.35	3.74	2.05

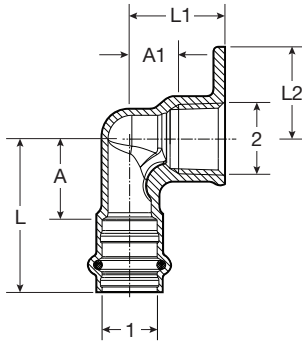
Submittal Package

viega



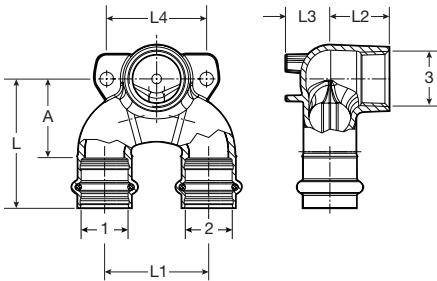
Viega ProPress 90° Drop Ear Elbow Zero Lead Bronze P X FPT - Model 2925.5ZL

Part No.	Size		A (in)	L (in)	L1 (in)	L2 (in)	L3 (in)
	1	2					
79185	1/2"	3/8" FPT	0.94	1.77	0.74	0.83	0.67
79190	1/2"	1/2" FPT	0.94	1.77	0.74	1.10	0.67
79195	3/4"	3/4" FPT	1.06	1.97	0.83	1.12	0.83



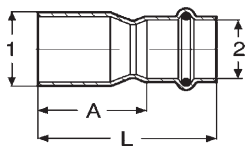
Viega ProPress 90° Hi Ear Elbow Zero Lead Bronze P x FPT - Model 2925.2ZL

Part No.	Size		A (in)	A1 (in)	L (in)	L1 (in)	L2 (in)
	1	2					
79205	1/2"	1/2" FPT	0.94	0.57	1.77	1.10	1.07



Viega ProPress Double Drop Elbow Zero Lead Bronze P x P x FPT - Model 2928.7ZL

Part No.	Size			A (in)	L (in)	L1 (in)	L2 (in)	L3 (in)	L4 (in)
	1	2	3						
78800	1/2"	1/2" x 1/2"	1/2" FNPT	1.34	2.17	1.97	1.10	0.67	1.57
78802	3/4"	3/4" x 3/4"	1/2" FNPT	1.54	2.44	1.97	1.10	0.83	2.05
78801	3/4"	3/4" x 3/4"	3/4" FNPT	1.54	2.44	1.97	1.12	0.83	1.89
78803	1"	1" x 1"	1/2" FNPT	1.77	2.68	2.36	1.10	0.87	2.52

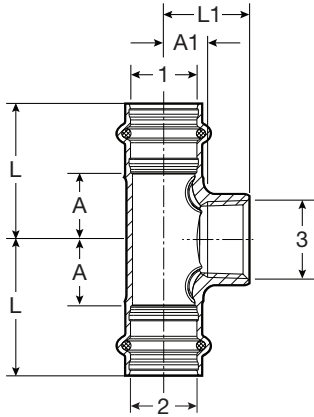


Viega ProPress Reducer Zero Lead Bronze FTG x P - Model 2915.1ZL

Part No.	Size		A (in)	L (in)
	1	2		
79850	1 1/2"	1 1/2"	1.95	2.78
79855	2"	1 1/2"	2.38	3.21
79860	2"	3/4"	2.42	3.33

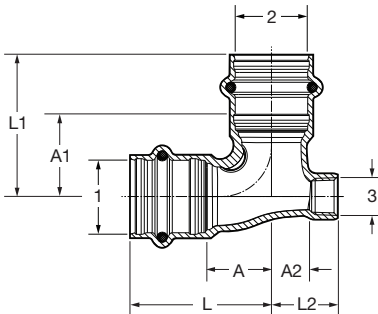
Submittal Package

viega



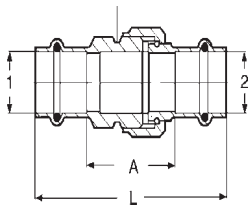
Viega ProPress Tee Zero Lead Bronze P x P x FPT - Model 2917.2ZL

Part No.	Size			A (in)	A1 (in)	L (in)	L1 (in)
	1	2	3				
79580	1/2"	1/2"	1/2" FPT	0.79	0.69	1.61	1.30
79585	3/4"	3/4"	1/4" FPT	0.67	0.79	1.57	1.18
79590	3/4"	3/4"	1/2" FPT	0.79	0.88	1.69	1.42
79595	3/4"	3/4"	3/4" FPT	0.91	0.59	1.81	1.14
79760	1"	1"	1/2" FPT	0.79	1.04	1.69	1.57
79765	1"	1"	3/4" FPT	0.91	1.06	1.81	1.61
79770	1 1/4"	1 1/4"	1/2" FPT	0.83	1.16	1.85	1.69
79775	1 1/4"	1 1/4"	3/4" FPT	0.95	1.18	1.97	1.73
79780	1 1/2"	1 1/2"	1/2" FPT	0.87	1.24	2.28	1.77
79785	1 1/2"	1 1/2"	3/4" FPT	0.94	1.30	2.36	1.85
79790	2"	2"	1/2" FPT	0.98	1.59	2.56	2.13
79795	2"	2"	3/4" FPT	1.06	1.65	2.64	2.20



Viega ProPress Vent Tee Zero Lead Bronze P x FPT x P - Model 2917.3ZL

Part No.	Size			A (in)	A1 (in)	A2 (in)	L (in)	L1 (in)	L2 (in)
	1	2	3						
79635	1/2"	1/8" FPT	1/2"	0.67	0.67	0.44	1.50	1.50	0.71
79640	3/4"	1/8" FPT	3/4"	0.83	0.83	0.54	1.73	1.73	0.81

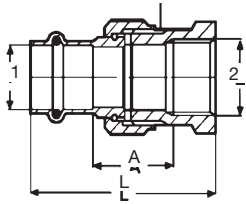


Viega ProPress Union Zero Lead Bronze P x P - Model 2960ZL

Part No.	Size		A (in)	L (in)
	1	2		
79125	1/2"		1.19	2.84
79130	3/4"		1.34	3.15
79135	1"		1.83	3.65
79140	1 1/4"		1.64	3.69
79145	1 1/2"		2.13	4.96
79150	2"		2.07	5.22

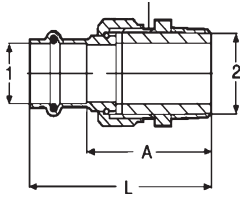
Submittal Package

viega



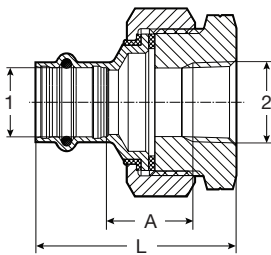
Viega ProPress Union Zero Lead Bronze P x FPT - Model 2962ZL

Part No.	Size		A (in)	L (in)
	1	2		
79700	1/2"	1/2" FPT	0.91	2.27
79705	3/4"	3/4" FPT	0.96	2.42
79710	1"	1" FPT	1.31	2.88
79715	1 1/4"	1 1/4" FPT	1.27	2.97
79720	1 1/2"	1 1/2" FPT	1.77	3.87
79725	2"	2" FPT	1.65	3.92



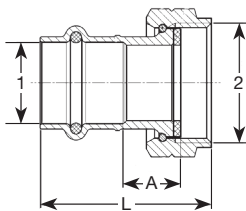
Viega ProPress Union Zero Lead Bronze P x MPT - Model 2965ZL

Part No.	Size		A (in)	L (in)
	1	2		
79730	1/2"	1/2" MPT	1.86	2.69
79735	3/4"	3/4" MPT	2.00	2.90
79740	1"	1" MPT	2.54	3.45
79745	1 1/4"	1 1/4" MPT	2.49	3.52
79750	1 1/2"	1 1/2" MPT	3.05	4.47
79755	2"	2" MPT	2.99	4.57



Viega ProPress Dielectric Union Zero Lead Bronze P x FPT - Model 2967ZL

Part No.	Size		A (in)	L (in)
	1	2		
79155	1/2"	1/2" FPT	0.88	2.24
79160	3/4"	3/4" FPT	1.11	2.57
79165	1"	1" FPT	1.00	2.57
79170	1 1/4"	1 1/4" FPT	0.97	2.68
79175	1 1/2"	1 1/2" FPT	1.01	3.11
79180	2"	2" FPT	1.26	3.53

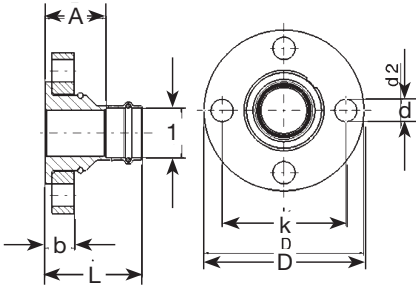


Viega ProPress Tailpiece Zero Lead Bronze P x F BSP - Model 2957ZL

Part No.	Size		A (in)	L (in)
	1	2		
79800	1/2"	1" BSP	0.39	1.57
79805	3/4"	1" BSP	0.63	1.87
79810	1"	1" BSP	0.91	2.14
79815	1"	1 1/4" BSP	0.73	2.04

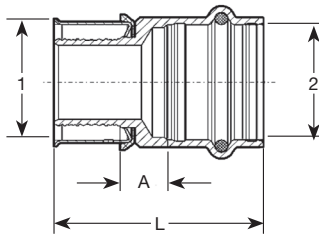
Submittal Package

viega



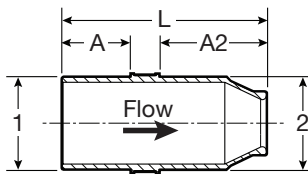
Viega ProPress Adapter Flange Zero Lead Bronze P x Flange - Model 2959.5ZL

Part No.	Size	L (in)	A (in)	b (in)	D (in)	k (in)	d (in)
	1						
79680	1"	2.76	1.85	0.84	4.33	3.11	0.63
79685	1¼"	2.76	1.73	0.84	4.53	3.50	0.63
79690	1½"	3.07	1.65	0.84	4.92	3.86	0.63
79695	2"	3.66	2.09	0.84	5.91	4.76	0.75



Viega PEX Press Adapter Zero Lead Bronze P x P - Model 2813PZL

Part No.	Size	A (in)	L (in)
	1 2		
99620	½" x ½"	0.29	1.61
99626	½" x ¾"	0.43	1.83
99630	¾" x ½"	0.23	1.56
99640	¾" x ¾"	0.33	1.73
99660	1" x 1"	0.45	1.97
99670	1¼" x 1¼"	0.49	2.38
99680	1½" x 1½"	0.59	2.87
99690	2" x 2"	0.58	3.21



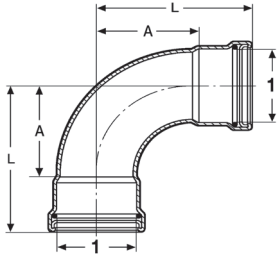
Viega ProPress Venturi Insert Zero Lead Bronze - Model 2911.5ZL

Part No.	Size	A (in)	A2 (in)	L (in)
	1 2			
78810	1¼" x 1¼"	1.02	1.60	3.07
78811	1½" x 1½"	1.43	2.10	3.98
78812	2" x 2"	1.58	2.45	4.48

Submittal Package

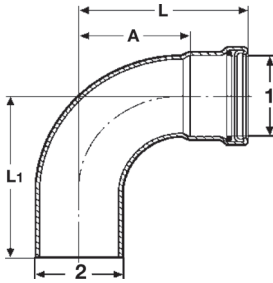
viega

ProPress XL for 2 1/4" to 4" copper tubing



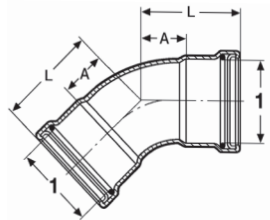
Viega ProPress XL-C 90° Elbow P x P - Model 0916XL

Part Number	Size	A (in)	L (in)
	1 1		
20623	2 1/2" x 2 1/2"	3.19	4.88
20628	3" x 3"	3.76	5.73
20633	4" x 4"	4.90	7.26



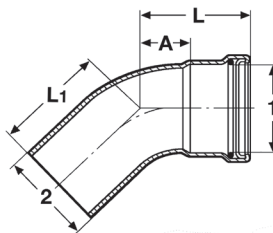
Viega ProPress XL-C 90° Street Elbow P x FTG - Model 0916.1XL

Part Number	Size	A (in)	L (in)	L1 (in)
	1 2			
20638	2 1/2" x 2 1/2"	3.19	4.88	4.80
20643	3" x 3"	3.76	5.73	5.63
20648	4" x 4"	4.90	7.26	7.13



Viega ProPress XL-C 45° P x P - Model 0926XL

Part Number	Size	A (in)	L (in)
	1 1		
20653	2 1/2" x 2 1/2"	1.48	3.18
20658	3" x 3"	1.73	3.70
20663	4" x 4"	1.96	4.63

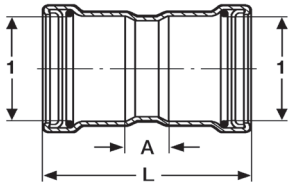


Viega ProPress XL-C 45° Street Elbow P x FTG - Model 0926.1XL

Part Number	Size	A (in)	L (in)	L1 (in)
	1 2			
20668	2 1/2" x 2 1/2"	1.48	3.18	3.10
20673	3" x 3"	1.73	3.70	3.60
20678	4" x 4"	2.23	4.59	4.45

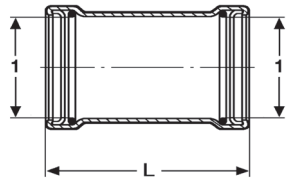
Submittal Package

viega



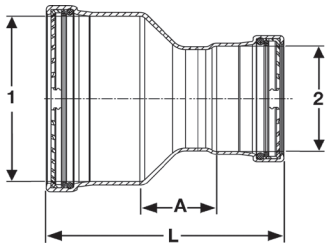
Viega ProPress XL-C Coupling with Stop P x P - Model 0915XL

Part Number	Size	A (in)	L (in)
	1 1		
20728	2½" x 2½"	0.95	4.33
20733	3" x 3"	0.98	4.92
20738	4" x 4"	1.06	5.79



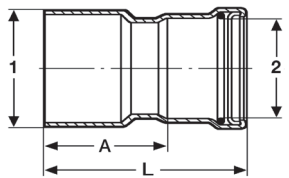
Viega ProPress XL-C Coupling No Stop P x P - Model 0915.5XL

Part Number	Size	L (in)
	1 1	
20743	2½" x 2½"	4.33
20748	3" x 3"	4.92
20753	4" x 4"	5.79



Viega ProPress XL-C Reducer P x P - Model 0915.2XL

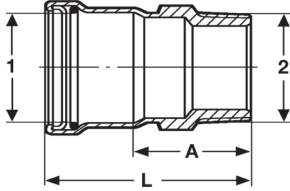
Part Number	Size	A (in)	L (in)
	1 2		
20685	2½" x 1"	1.76	4.36
20690	2½" x 1¼"	1.61	4.34
20695	2½" x 1½"	1.52	4.64
20700	2½" x 2"	1.41	4.69
20705	3" x 1½"	1.78	5.17
20710	3" x 2"	1.53	5.08
20715	3" x 2½"	1.41	5.07
20720	4" x 2"	2.06	6.00
20725	4" x 2½"	1.93	5.99
20730	4" x 3"	1.70	6.03



Viega ProPress XL-C Reducer FTG x P - Model 0915.1XL

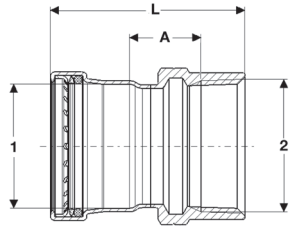
Part Number	Size	A (in)	L (in)
	1 2		
20814	2½" x 1"	3.61	4.52
20815	2½" x 1¼"	3.47	4.51
20813	2½" x 1½"	3.41	4.84
20758	2½" x 2"	2.35	3.94
20817	3" x 1¼"	3.96	5.00
20818	3" x 1½"	3.91	5.34
20763	3" x 2"	2.98	4.57
20768	3" x 2½"	2.76	4.45
20773	4" x 2"	4.58	6.17
20778	4" x 2½"	4.45	6.15
20783	4" x 3"	4.17	6.14

Submittal Package



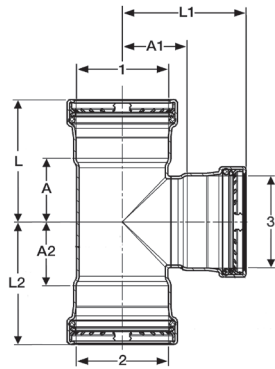
Viega ProPress XL-C Adapter P x MPT - Model 0911XL

Part Number	Size	A (in)	L (in)
	1 2		
20823	2½" x 2½" MPT	2.76	4.45
20828	3" x 3" MPT	2.84	4.80
20838	4" x 4" MPT	3.10	5.46



Viega ProPress XL-C Adapter P x FPT - Model 0912XL

Part Number	Size	A (in)	L (in)
	1 2		
20819	2½" x 2½" FPT	1.53	4.15
20829	3" x 3" FPT	1.84	4.82
20839	4" x 4" FPT	2.09	5.55



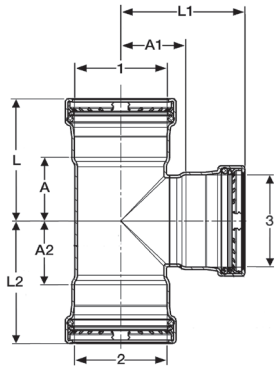
Viega ProPress XL-C Tee P x P x P - Model 0918XL

Part Number	Size	A (in)	A1 (in)	A2 (in)	L (in)	L1 (in)	L2 (in)
	1 2 3						
20684	2½" x ¾" x 2½"	1.83	1.91	3.23	3.52	3.60	4.13
20689	2½" x 1" x 2½"	1.83	1.91	3.25	3.52	3.60	4.15
20694	2½" x 1¼" x 2½"	1.83	1.91	3.20	3.52	3.60	4.23
20699	2½" x 1½" x 2½"	1.83	1.91	3.14	3.52	3.60	4.57
20704	2½" x 2" x ¾"	1.04	1.61	1.59	2.74	2.52	3.17
20709	2½" x 2" x 1"	1.04	1.77	1.65	2.74	2.67	3.24
22283	2½" x 2" x 1½"	1.30	1.78	2.07	2.99	3.20	3.66
22278	2½" x 2" x 2"	1.50	1.78	2.25	3.19	3.36	3.83
20714	2½" x 2" x 2½"	1.83	1.91	2.41	3.52	3.60	4.00
22303	2½" x 2½" x ½"	0.91	1.52	0.91	2.60	2.27	2.60
22298	2½" x 2½" x ¾"	0.91	1.58	0.91	2.60	2.48	2.60
22293	2½" x 2½" x 1"	1.04	1.77	1.04	2.74	2.68	2.74
22288	2½" x 2½" x 1¼"	1.16	1.76	1.16	2.85	2.79	2.85
20803	2½" x 2½" x 1½"	1.30	1.78	1.30	2.99	3.21	2.99
20688	2½" x 2½" x 2"	1.54	1.75	1.54	3.23	3.34	3.23
20683	2½" x 2½" x 2½"	1.83	1.94	1.83	3.52	3.63	3.52
20719	3" x ¾" x 3"	2.07	2.15	3.82	4.04	4.11	4.72
20724	3" x 1" x 3"	2.07	2.15	3.96	4.04	4.11	4.86
20729	3" x 1¼" x 3"	2.07	2.15	3.83	4.04	4.11	4.86

Continued on next page

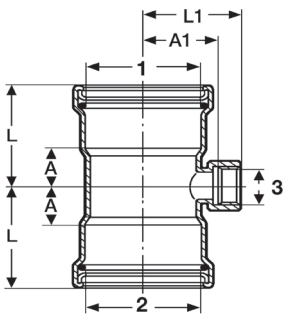
Submittal Package

viega



Viega ProPress XL-C Tee P x P x P - Model 0918XL (continued from previous page)

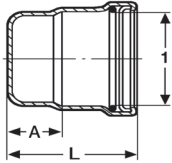
Part Number	Size	Dimensions (in)					
		A	A1	A2	L	L1	L2
	1 2 3						
20727	3" x 1½" x 3"	2.07	2.15	3.71	4.04	4.11	5.14
20732	3" x 2" x 2"	1.56	2.03	2.33	3.52	3.61	3.92
20734	3" x 2" x 2½"	1.85	2.15	2.63	3.82	3.85	4.21
20739	3" x 2" x 3"	2.07	2.15	2.84	4.04	4.11	4.43
20744	3" x 2½" x 2"	1.56	2.03	2.07	3.52	3.61	3.76
20749	3" x 2½" x 2½"	1.85	2.15	2.56	3.82	3.85	4.25
20754	3" x 2½" x 3"	2.07	2.15	2.78	4.04	4.11	4.47
20759	3" x 3" x ½"	0.93	1.76	0.93	2.89	2.50	2.89
22323	3" x 3" x ¾"	0.93	1.80	0.93	2.89	2.71	2.89
22308	3" x 3" x 1"	1.06	2.02	1.06	3.03	2.92	3.03
22313	3" x 3" x 1¼"	1.18	2.01	1.18	3.15	3.04	3.15
20798	3" x 3" x 1½"	1.32	2.03	1.32	3.29	3.45	3.29
20698	3" x 3" x 2"	1.56	2.00	1.56	3.52	3.59	3.52
20703	3" x 3" x 2½"	1.85	2.15	1.85	3.82	3.85	3.82
20693	3" x 3" x 3"	2.07	2.21	2.07	4.04	4.18	4.04
20774	4" x 3" x 2"	1.59	2.57	3.33	3.96	4.15	5.22
20784	4" x 3" x 3"	2.11	2.66	3.84	4.47	4.63	5.81
20788	4" x 4" x ½"	1.08	2.24	1.08	3.45	2.99	3.45
20793	4" x 4" x ¾"	1.08	2.32	1.08	3.45	3.22	3.45
20794	4" x 4" x 1"	1.36	2.52	1.36	3.72	3.42	3.72
20795	4" x 4" x 1¼"	1.36	2.50	1.36	3.72	3.54	3.72
20808	4" x 4" x 1½"	1.36	2.52	1.36	3.72	3.95	3.72
20713	4" x 4" x 2"	1.59	2.53	1.59	3.96	4.11	3.96
20718	4" x 4" x 2½"	1.89	2.65	1.89	4.25	4.35	4.25
20723	4" x 4" x 3"	2.11	2.69	2.11	4.47	4.65	4.47
20708	4" x 4" x 4"	2.60	2.72	2.60	4.96	5.09	4.96



Viega ProPress XL-C Tee P x P x FPT - Model 0917.2XL

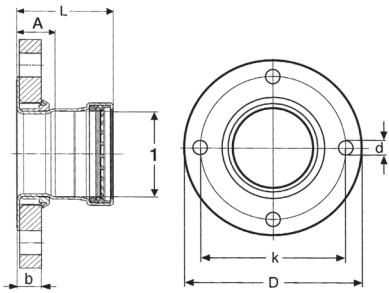
Part Number	Size	Dimensions (in)			
		A	A1	L	L1
	1 2 3				
20883	2½" x 2½" x ¾" FPT	1.02	1.78	2.72	2.34
20878	2½" x 2½" x 2" FPT	1.54	1.90	3.23	2.60
20893	3" x 3" x ¾" FPT	1.04	2.03	3.01	2.59
20888	3" x 3" x 2" FPT	1.56	2.16	3.52	2.85
20873	4" x 4" x ¾" FPT	1.08	2.53	3.34	3.09
20868	4" x 4" x 2" FPT	1.59	2.69	3.96	3.38

Submittal Package



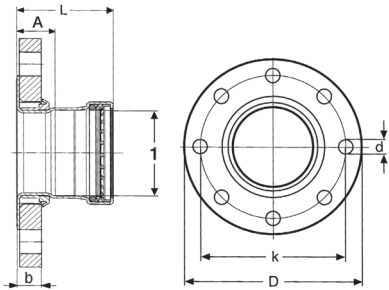
Viegapro XL-C Cap P - Model 0956XL

Part Number	Size	A (in)	L (in)
	1		
20833	2½"	0.39	2.11
20843	3"	0.39	2.36
20848	4"	0.39	2.76



Viegapro XL-C Adapter Flange P x Flange - Model 0959.5XL

Part Number	Size	A (in)	L (in)	b (in)	k (in)	D (in)	d (in)
	1						
20853	2½"	1.09	2.79	0.70	5.51	7.09	0.75
20858	3"	1.20	3.17	0.79	5.98	7.48	0.75

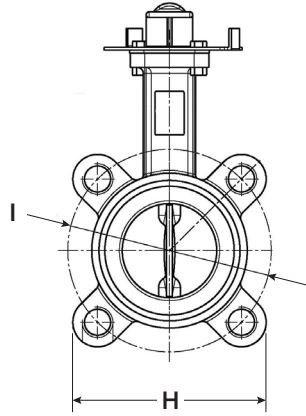
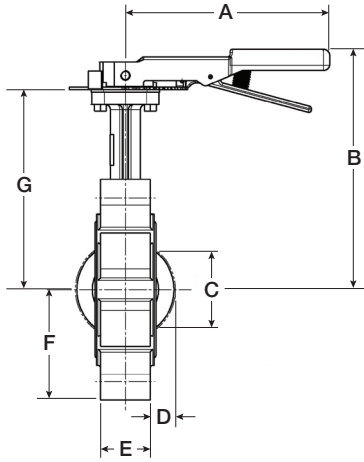


Viegapro XL-C Adapter Flange P x Flange - Model 0959.5XL

Part Number	Size	A (in)	L (in)	b (in)	k (in)	D (in)	d (in)
	1						
20863	4"	1.29	3.66	0.86	7.52	9.06	0.75

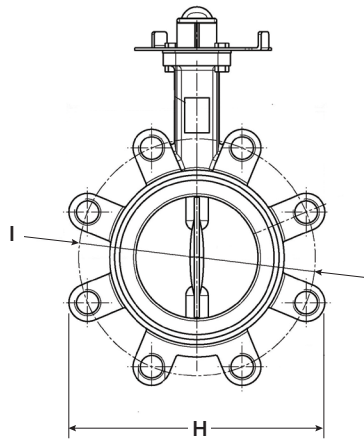
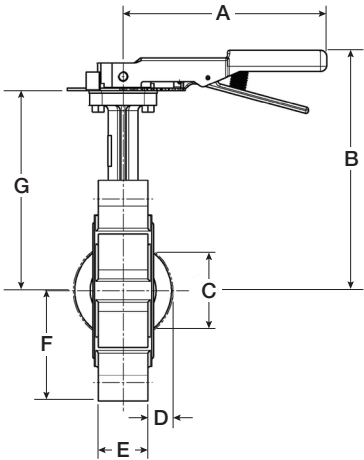
Submittal Package

viega



Butterfly Valve - Model 2873.81

Part No.	Size	A (in)	B (in)	C (in)	D (in)	E (in)	F (in)	G (in)	H (in)	I (in)
22074	2½"	6.50	7.40	2.17	0.43	1.81	2.64	5.35	5.20	5.51
22075	3"	7.28	7.64	2.80	0.67	1.81	2.82	5.59	7.01	5.98



Butterfly Valve - Model 2873.81

Part No.	Size	A (in)	B (in)	C (in)	D (in)	E (in)	F (in)	G (in)	H (in)	I (in)
22076	4"	9.06	8.47	3.54	0.91	2.05	3.62	6.42	8.27	7.48

Submittal Package

viega

Viega Limited Warranty ProPress® Fittings And Valves

Subject to the conditions and limitations in this Limited Warranty, Viega LLC (VIEGA) warrants to wholesalers and licensed plumbing and mechanical contractors in the United States and Canada that its PROGRESS fittings, when properly installed in non industrial and non marine applications and under normal conditions of use, will be free of failure from manufacturing defect for a period of fifty (50) years from date of installation and that its PROGRESS valves, when properly installed in non industrial and non marine applications and under normal conditions of use, will be free of failure from manufacturing defect for a period of two (2) years from date of installation.

Under this Limited Warranty, you only have a right to a remedy if the failure or leak resulted from a manufacturing defect in the products covered by this warranty and the failure or leak occurred during the warranty period. You do not have a remedy under this warranty and the warranty does not apply if the failure or any resulting damage is caused by (1) components other than those manufactured or sold by Viega; (2) not designing, installing, inspecting, or testing the ProPress fittings or valves in accordance with Viega's installation instructions in effect at the time of the installation; applicable code requirements; and accepted industry practice; (3) improper handling and protection of the product prior to and during installation, inadequate freeze protection, exposure to water pressures or temperatures or in applications outside acceptable operating conditions; (4) acts of nature such as, but not limited to, earthquakes, fire, flood, or lightning, or (5) external environmental causes, such as water quality variations, aggressive water, or other external chemical or physical conditions.

In the event of a leak or other failure of the parts covered by this warranty, it is the responsibility of the property owner to obtain and pay for repairs. Only if the warranty applies will Viega be responsible for the remedy under this

warranty. The part or parts which you claim failed should be kept and Viega contacted by writing to the address below or telephoning 1-800-976-9819 within thirty (30) days after the leak or other failure and identifying yourself as having a warranty claim. You should be prepared to ship, at your expense, the product which you claim failed due to a manufacturing defect and document the date of installation. Within a reasonable time after receiving the product, Viega will investigate the reasons for the failure, which includes the right to inspect the product at Viega. Viega will notify you in writing of the results of its review.

In the event that Viega determines that the failure or leak was the result of a manufacturing defect in the part covered by this warranty and that this warranty applies, the EXCLUSIVE AND ONLY REMEDY under this warranty shall be the reimbursement for repair and/or replacement of the part. VIEGA SHALL NOT BE LIABLE FOR ANY CONSEQUENTIAL OR OTHER DAMAGE (FOR EXAMPLE, WATER OR PROPERTY OR MOLD REMEDIATION) UNDER ANY LEGAL THEORY AND WHETHER ASSERTED BY DIRECT ACTION, FOR CONTRIBUTION OR INDEMNITY OR OTHERWISE.

THE ABOVE WARRANTY IS IN LIEU OF ALL OTHER WARRANTIES, EXPRESS OR IMPLIED, INCLUDING BUT NOT LIMITED TO THE IMPLIED WARRANTIES OF MERCHANTABILITY AND FITNESS FOR A PARTICULAR PURPOSE. If a limited warranty shall be found to apply, such warranty is limited to four years. Other than this Limited Warranty, Viega does not authorize any person or firm to create for it any other obligation or liability in connection with its products.

This Limited Warranty gives you specific legal rights and you also may have other rights which may vary from state to state. This warranty shall be interpreted and applied under the law of the state in which the product is installed and is intended as a Commercial Warranty.

*Zero Lead identifies Viega® products meeting the lead free requirements of NSF 61-G through testing under NSF/ANSI 372 (0.25% or less maximum weighted average lead content).

Viega products are designed to be installed by licensed and trained plumbing and mechanical professionals who are familiar with our products' proper use and installation. Installation by non-professionals may void Viega LLC's warranty.

This document is subject to updates. For the most current Viega technical literature please visit www.viega.us.

Viega LLC • 585 Interlocken Blvd. • Broomfield, CO 80021 • Phone (800) 976-9819 • www.viega.us