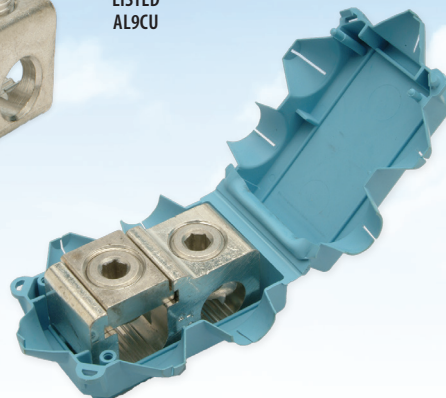
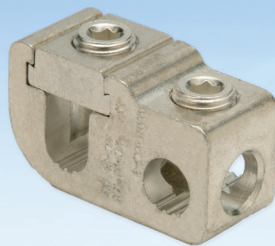


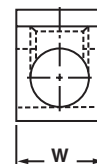
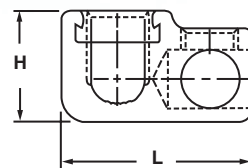
Aluminum Parallel T-Tap Connectors

Type GPT

- Manufactured from high strength aluminum alloy extrusion
- Dual rated for copper and aluminum conductors
- Design permits parallel or 90° angle tap connections
- Lay-in feature allows for easy installation on main conductor
- Electro-tin plated to ensure minimum contact resistance and protection against corrosion when used with copper wire
- The use of oxide inhibitor is recommended for all aluminum terminations



CATALOG NUMBER	CONDUCTOR RANGE		APPROXIMATE DIMENSIONS (IN.)			HEX SIZE	
	MAIN	TAP	H	W	L	MAIN	TAP
GPT-2	12 Sol. - 2 Str.	14 Sol. - 4 Str. CU 12 Sol. - 4 Str. AL	.88	.63	1.39	SLOT	SLOT
GPT-1/0	2 Str. - 1/0 Str.	14 Sol. - 1/0 Str. CU 12 Sol. - 1/0 Str. AL	1.00	.75	1.75	3/16	3/16
GPT-250-0	1/0 Str. - 250 kcmil	14 Sol. - 1/0 Str. CU 12 Sol. - 1/0 Str. AL	1.31	1.06	2.03	5/16	3/16
GPT-250	1/0 Str. - 250 kcmil	6 Str. - 250 kcmil	1.31	1.06	2.28	5/16	5/16
GPT-350	4/0 Str. - 350 kcmil	6 Str. - 350 kcmil	1.44	1.25	2.56	5/16	5/16
GPT-500	350 - 500 kcmil	2 Str. - 500 kcmil	1.75	1.38	3.13	3/8	3/8
GPT-750	500 - 750 kcmil	2 Str. - 500 kcmil	2.00	1.50	3.38	3/8	3/8



Insulating Covers for GPT Connectors

Type GTC

- Manufactured from 105°C rated material, 600 volt maximum
- Snap-lock feature eliminates the need for taping reducing labor time



CATALOG NUMBER	COVER FOR MODEL NUMBER	COVER COLOR	APPROXIMATE DIMENSIONS (IN.)		
			H	W	L
GTC-2	GPT-2	Yellow	1.11	1.91	2.22
GTC-1/0	GPT-1/0	Gray	1.25	2.16	2.63
GTC-250	GPT-250	Red	1.63	2.88	3.44
GTC-250	GPT-250-0	Red	1.63	2.88	3.44
GTC-350	GPT-350	Yellow	1.75	3.19	3.75
GTC-500	GPT-500	Blue	2.09	3.31	4.38
GTC-750	GPT-750	Orange	2.34	3.44	4.63

